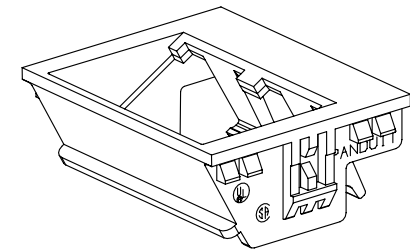
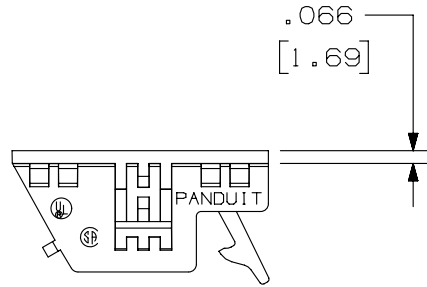
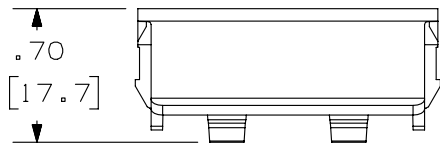
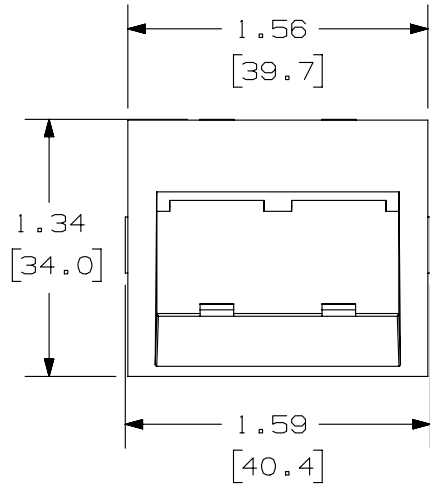


THIS COPY IS PROVIDED ON A RESTRICTED BASIS AND IS NOT TO BE USED IN ANY WAY DETRIMENTAL TO THE INTERESTS OF PANDUIT CORP.



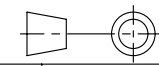
PANDUIT P/N	WEIGHT
CHSRE2** -X	.10 LB/10 PCS (44 g/10 PCS)

NOTES:

- SEE CURRENT CATALOG FOR ADDITIONAL PART NUMBER SUFFIXES TO INDICATE COLOR AND OR PACKAGE QUANTITY.
- SEE CATALOG FOR COMPLETE LIST OF PARTS APPLICABLE FOR USE WITH THIS PART.
- DIMENSIONS IN [] ARE IN METRIC.
- FOR USE WITH ANY MINI-COM BEZEL DESIGNED TO ACCEPT 1/2 SIZE INSERTS.

PART NUMBER		CHSRE2** - X	
TITLE			
MINI-COM 2 POSITION SLOPED 30° RECESSED 1/2 INSERT			
CUSTOMER DRAWING			
ITEM REVISION NAME		M01334BA/00	
DATASET FILE NAME		M01334BA_DC/00B	
UNLESS OTHERWISE SPECIFIED, DIMENSIONAL TOLERANCES ARE: IN [mm]		MATERIAL:	
.x ± .xx ± .03 [.8]		ABS	
.xxx ± .010 [.3]		DRAWING NUMBER:	
ANGLES ±		01334-02	
THIRD ANGLE PROJECTION		SHT 1 OF 1	
DRAWN BY	DATE	CHK	SCALE
JSP	4-23-02	PBD	NONE
REV	DATE	BY	CHK
1	4-23-02	JSP	PBD
DESCRIPTION		APR	ECN
A. REVISED DRAWING TITLE BLOCK.			01334-02
RELEASED TO PRODUCTION			01334-02

REV	DATE	BY	CHK	APR	DESCRIPTION	ECN
1	4-23-14	JSP	REFR	MMR	A. REVISED DRAWING TITLE BLOCK.	01334-02
R	4-23-02	JSP	PBD	PBD	RELEASED TO PRODUCTION	01334-02



D101000DA/14