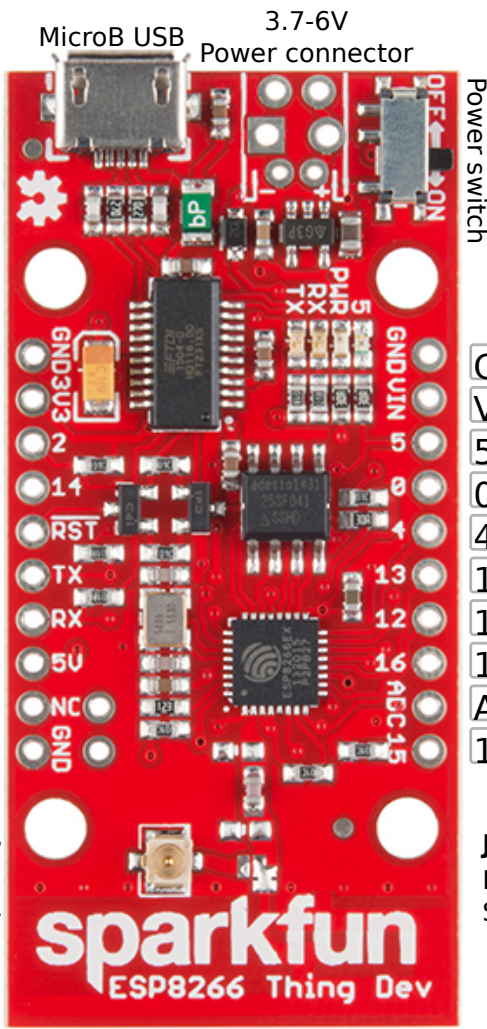


ESP8266 Thing Dev Board (WRL-13711)

Arduino add-on available
80MHz

Name	Arduino
Power	ADC
GND	Serial
Control	Misc



	GND	GND
	3.3V	3V3
SDA	D2	2
SCL/SCLK	D14	14
	Reset	RST
TX	D7	TX
RX	D8	RX
	V_USB	5V
	Not Connected	NC
	GND	GND

u.fl antenna connector
Not Connected
To use swap the solder jumper

Power switch

GPIO0
On bootup will run program if high and bootloader if low
Tied to DTR to run bootloader when reset

GND	GND	
Vin	Vin	
5	D5	LED
0	D0	Used in reset
4	D4	
13	D13	MOSI
12	D12	MISO
16	D16	XPB
ADC	A0	10-bit 1V
15	D15	CS

Jumpers on back
PWR-LED - cut to disconnect power LED
SLEEP-EN - Connect RST to XPB to enable sleep (disables programming)

PCB Antenna

Power (ESP8266 Thing)
Vin: 3.7V-6V
VUSB: 5V
VCC:3.3V @500mA
Max 12mA per I/O pin

Typical Power (ESP8266 module)
Transmit 135-215mA
Receive 60-62mA
Standby 0.9mA
Deep sleep 10uA

LEDs
Power: Red
User (pin 5): Blue
RX: Yellow
TX: Green

Wi-Fi
802.11 b/g/n
Wi-Fi Direct (P2P) soft AP

sparkfun.com

CC BY SA