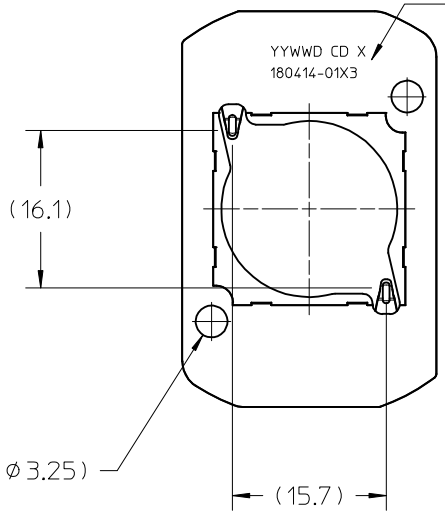
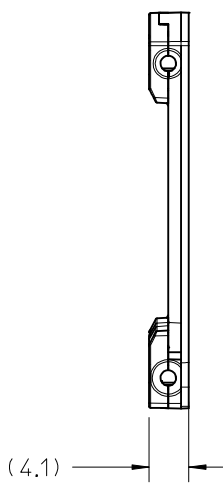
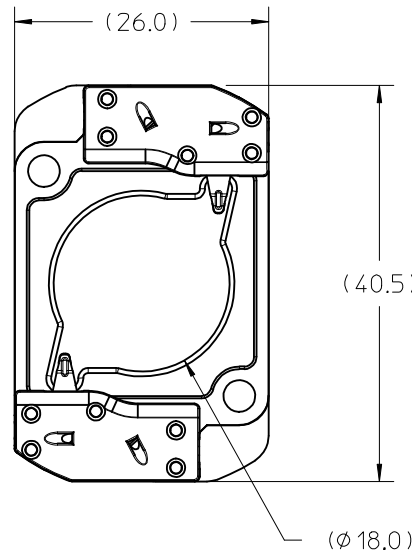
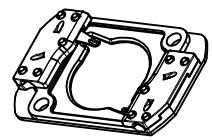


10	9	8	7	6	5	4	3	2	1
PART NUMBER	DESCRIPTION				MATERIAL			AGENCY APPROVAL	
180414-0103	COB LED HOLDER 19.0MM X 19.0MM SQUARE				POLYAMIDE (PA66) GLASS FILLED, COLOR: NATURAL			UL496 FILE E345583	
180414-0113	COB LED HOLDER 19.0MM X 19.0MM SQUARE				POLYESTER (PBT) GLASS FILLED, COLOR: WHITE			UL496 FILE E345583	
180414-0203	COB LED HOLDER 19.0MM X 19.0MM SQUARE WITH TAB CAP				POLYAMIDE (PA66) GLASS FILLED, COLOR: NATURAL			UL496 FILE E345583	
180414-0213	COB LED HOLDER 19.0MM X 19.0MM SQUARE WITH TAB CAP				POLYESTER (PBT) GLASS FILLED, COLOR: WHITE			UL496 FILE E345583	

HOLDER ASSEMBLY
P/N 180414-0103
P/N 180414-0113



PART MARKED WITH
DATE CODE (YYWWD)
MFG PLANT (CD)
REVISION (X)
PART NUMBER (180414-01X3)



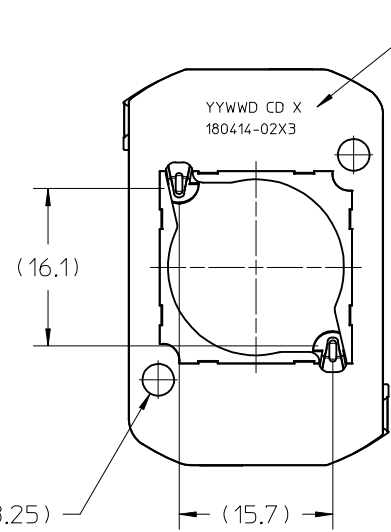
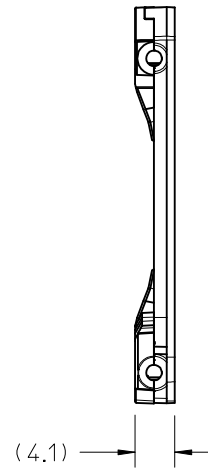
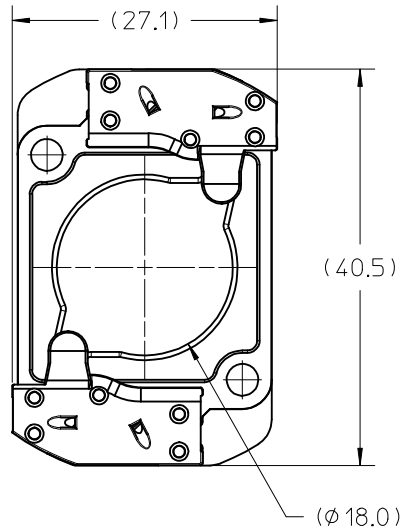
ISOMETRIC VIEW 1
SCALE 1:1

- NOTES:
1. MATERIALS: HOUSING: SEE CHART; TERMINAL: COPPER ALLOY
 2. FINISHES: TERMINAL: NICKEL (Ni) UNDERPLATE 1.27 μ m, SELECT TIN (Sn) 2.54 μ m, SELECT GOLD (Au) 0.76 μ m
 3. PRODUCT SPECIFICATION: PS-180414-001
 4. PACKAGING SPECIFICATION: PK-180419-006
 5. APPLICATION SPECIFICATION: AS-180412-001
 6. SEE SHEET 3 FOR APPLICATION NOTES
 7. ELV AND ROHS COMPLIANT
 8. ALL DIMENSIONS IN PARENTHESIS (XX.XX) ARE FOR REFERENCE ONLY.

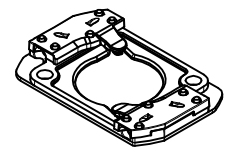
ENTER DESCRIPTION EC NO: SSL2017-0012 DRAWN: ZABJANOVSKI 2016/08/16 CHKD: APPR: GMEYER 2016/09/21	QUALITY SYMBOLS ▽/0 ▽/0 ▽/0	GENERAL TOLERANCES (UNLESS SPECIFIED)		DIMENSION STYLE		SCALE	DESIGN UNITS	THIRD ANGLE PROJECTION		
		mm	INCH	MM ONLY		2:1	METRIC			
		4 PLACES ± --- ± ---		DRAWN BY	DATE	TITLE				
		3 PLACES ± --- ± ---		MDEVITO	2012/04/16	COB LED HOLDER 19.0 MM X 19.0 MM SQUARE				
2 PLACES ± 0.13 ± ---		CHECKED BY	DATE	molex						
1 PLACE ± 0.25 ± ---		MCOLE	2012/08/06							
0 PLACE ± --- ± ---		APPROVED BY	DATE	DOCUMENT NO.		SD-180414-103				
ANGULAR ± 1/2°		DMCGOWAN	2012/08/06	SHEET NO.					1 OF 4	
DRAFT WHERE APPLICABLE MUST REMAIN WITHIN DIMENSIONS		SEE CHART		THIS DRAWING CONTAINS INFORMATION THAT IS PROPRIETARY TO MOLEX INCORPORATED AND SHOULD NOT BE USED WITHOUT WRITTEN PERMISSION						
B3	REV	SIZE B								

10 9 8 7 6 5 4 3 2 1

HOLDER ASSEMBLY WITH TAB CAP
P/N 180414-0203
P/N 180414-0213



PART MARKED WITH
DATE CODE (YYWWD)
MFG PLANT (CD)
REVISION (X)
PART NUMBER (180414-02X3)

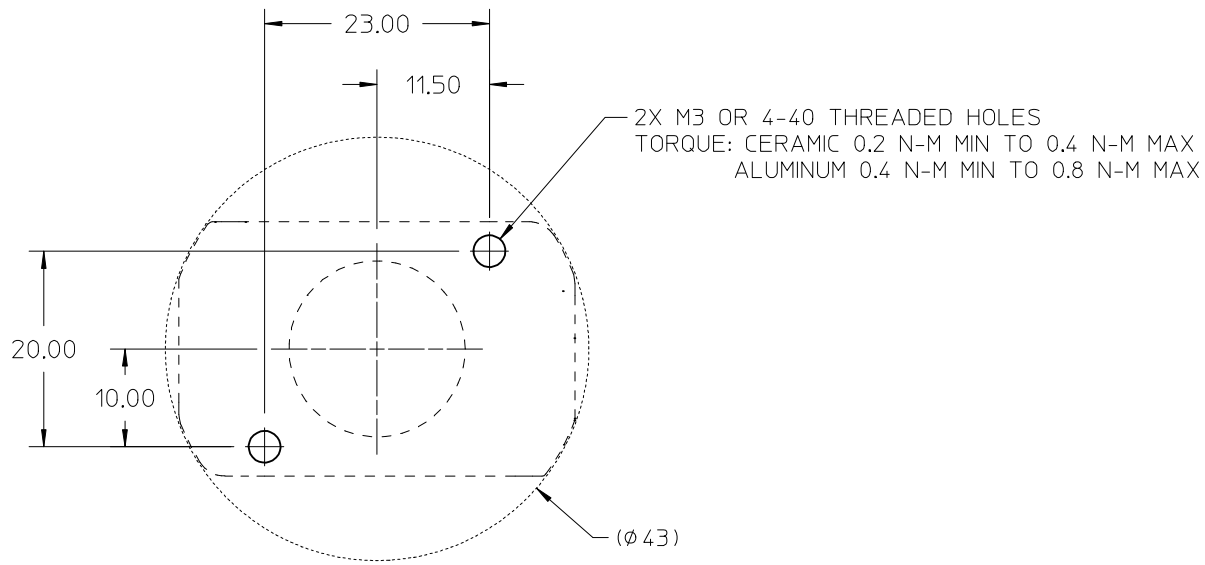


ISOMETRIC VIEW 2
SCALE 1:1

ENTER DESCRIPTION EC NO: SSL2017-0012 DRWNL:ZAB.JANOVSKI 2016/08/16 CHKD: APPR:GMEYER 2016/09/21 REV	QUALITY SYMBOLS $\nabla F/0$ $\nabla F/0$ $\nabla F/0$	GENERAL TOLERANCES (UNLESS SPECIFIED) <table border="1"> <thead> <tr> <th></th> <th>mm</th> <th>INCH</th> </tr> </thead> <tbody> <tr> <td>4 PLACES</td> <td>± ---</td> <td>± ---</td> </tr> <tr> <td>3 PLACES</td> <td>± ---</td> <td>± ---</td> </tr> <tr> <td>2 PLACES</td> <td>± 0.13</td> <td>± ---</td> </tr> <tr> <td>1 PLACE</td> <td>± 0.25</td> <td>± ---</td> </tr> <tr> <td>0 PLACE</td> <td>± ---</td> <td>± ---</td> </tr> </tbody> </table>		mm	INCH	4 PLACES	± ---	± ---	3 PLACES	± ---	± ---	2 PLACES	± 0.13	± ---	1 PLACE	± 0.25	± ---	0 PLACE	± ---	± ---	DIMENSION STYLE MM ONLY	SCALE 2:1	DESIGN UNITS METRIC	THIRD ANGLE PROJECTION
		mm	INCH																					
	4 PLACES	± ---	± ---																					
	3 PLACES	± ---	± ---																					
	2 PLACES	± 0.13	± ---																					
1 PLACE	± 0.25	± ---																						
0 PLACE	± ---	± ---																						
DRAWN BY MDEVITO	DATE 2012/04/16	TITLE COB LED HOLDER 19.0 MM X 19.0 MM SQUARE																						
CHECKED BY MCOLE	DATE 2012/08/06	molex																						
APPROVED BY DMCGOWAN	DATE 2012/08/06	MATERIAL NO. SEE CHART	DOCUMENT NO. SD-180414-103	SHEET NO. 2 OF 4																				
B3	DRAFT WHERE APPLICABLE MUST REMAIN WITHIN DIMENSIONS	SIZE B	THIS DRAWING CONTAINS INFORMATION THAT IS PROPRIETARY TO MOLEX INCORPORATED AND SHOULD NOT BE USED WITHOUT WRITTEN PERMISSION																					

9 8 7 6 5 4 3 2 1

10 9 8 7 6 5 4 3 2 1



RECOMMENDED MOUNTING DIMENSIONS

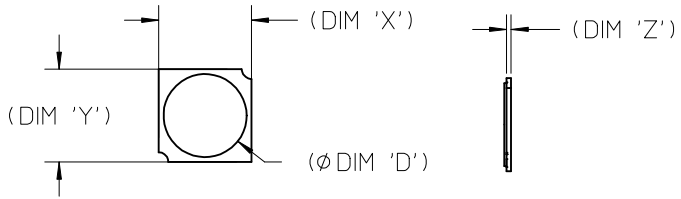
NOTES:

1. WIRE GAUGE: 18, 20, OR 22 AWG, SOLID OR STRANDED WITH TIN OVERCOAT. STRIP LENGTH 10MM +2.0/-0.0MM. RECOMMENDED MAXIMUM DIAMETER AFTER TINNING: 1.40MM. LARGER DIAMETER WIRES ARE ACCEPTABLE IF FULLY INSERTABLE IN WIRE TRAP AND NO WITHDRAWAL WITHIN 20N FORCE.

ENTER DESCRIPTION EC NO: SSL2017-0012 DRWNLZABJANOVSKI 2016/08/16 CHKD: APPR:GMEYER 2016/09/21 REV	QUALITY SYMBOLS	GENERAL TOLERANCES (UNLESS SPECIFIED)		DIMENSION STYLE MM ONLY		SCALE 2:1	DESIGN UNITS METRIC	THIRD ANGLE PROJECTION	
	$\nabla Z=0$	mm	INCH	DRAWN BY MDEVITO	DATE 2012/04/16	TITLE COB LED HOLDER 19.0 MM X 19.0 MM SQUARE			
	$\nabla Y=0$	4 PLACES ± ---	± ---	CHECKED BY MCOLE	DATE 2012/08/06				
	$\nabla X=0$	3 PLACES ± ---	± ---	APPROVED BY DMCGOWAN	DATE 2012/08/06	DOCUMENT NO. SD-180414-103		SHEET NO. 3 OF 4	
	2 PLACES ± 0.13	± ---	MATERIAL NO.		THIS DRAWING CONTAINS INFORMATION THAT IS PROPRIETARY TO MOLEX INCORPORATED AND SHOULD NOT BE USED WITHOUT WRITTEN PERMISSION				
	1 PLACE ± 0.25	± ---	DRAFT WHERE APPLICABLE MUST REMAIN WITHIN DIMENSIONS		SEE CHART				
	0 PLACE ± ---	± ---			SIZE B				

9 8 7 6 5 4 3 2 1

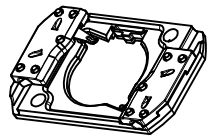
COB MFG	TYPE	DIM 'X'	DIM 'Y'	DIM 'Z'	DIM 'D'
CITIZEN	CLL030, CLL032, CLU034, CLU036, CLU038	19.0	19.0	0.90	17.0
TRIDONIC	SLE G5 LES15	19.0	19.0	0.90	15.0
SEOUL	ZC12, ZC18	19.0	19.0	0.90	16.0
CITIZEN	CLU720, CLU721	19.0	19.0	0.90	13.5
EVERLIGHT	EAHP1919WA*, EAHP1919WB*, EAHP1919WC*	19.0	19.0	0.90	15.5
EVERLIGHT	EA1919 36V/16W	19.0	19.0	0.90	15.5
EVERLIGHT	EA1919 36V/19W	19.0	19.0	0.90	15.5
EVERLIGHT	EA1919 36V/26W	19.0	19.0	0.90	15.5
VOSSLOH-SCHWABE	DMC114C	19.0	19.0	1.00	11.9
VOSSLOH-SCHWABE	DMC124***F, DMC125***F	19.0	19.0	1.00	13.1
VOSSLOH-SCHWABE	DMC125C	19.0	19.0	1.00	13.1
VOSSLOH-SCHWABE	DMC128***F	19.0	19.0	1.00	15.8
BRIDGELUX	H15	19.0	19.0	1.10	16.5



COB LED
SCALE 1:1

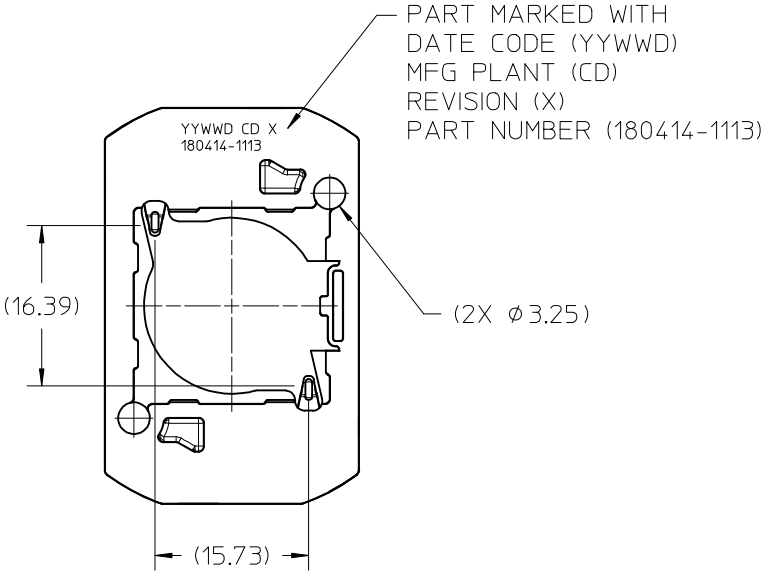
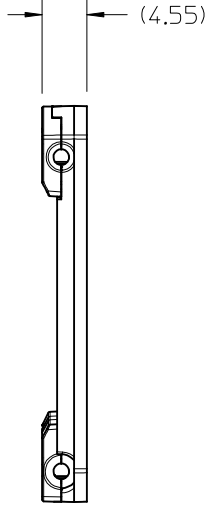
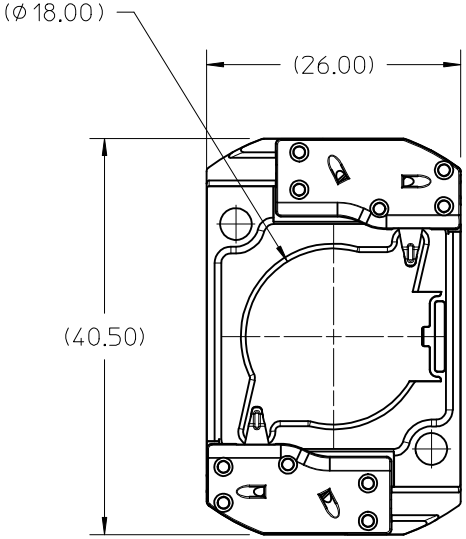
ENTER DESCRIPTION EC NO: SSL2017-0012 DRWNL:ZAB.JANOVSKI 2016/08/16 CHKD: APPR:GMEYER 2016/09/21 REV	QUALITY SYMBOLS ▽=0 ▽=0	GENERAL TOLERANCES (UNLESS SPECIFIED) mm INCH 4 PLACES ± --- ± --- 3 PLACES ± --- ± --- 2 PLACES ± 0.13 ± --- 1 PLACE ± 0.25 ± --- 0 PLACE ± --- ± --- ANGULAR ± 1/2°	DIMENSION STYLE MM ONLY DRAWN BY DATE MDEVITO 2012/04/16 CHECKED BY DATE MCOLE 2012/08/06 APPROVED BY DATE DMCGOWAN 2012/08/06 MATERIAL NO.	SCALE 2:1 DESIGN UNITS METRIC THIRD ANGLE PROJECTION	TITLE COB LED HOLDER 19.0 MM X 19.0 MM SQUARE molex	SHEET NO. 4 OF 4
	DRAFT WHERE APPLICABLE MUST REMAIN WITHIN DIMENSIONS	SEE CHART	DOCUMENT NO. SD-180414-103	THIS DRAWING CONTAINS INFORMATION THAT IS PROPRIETARY TO MOLEX INCORPORATED AND SHOULD NOT BE USED WITHOUT WRITTEN PERMISSION		
	B3	SIZE B				

10	9	8	7	6	5	4	3	2	1	
PART NUMBER	DESCRIPTION		POCKET DEPTH	HOUSING	TERMINAL	CAP				
180414-1113	COB LED HOLDER ASSEMBLY		0.90	180413-1113	180155-0133	180154-0105				
180414-2113	COB LED HOLDER ASSEMBLY		0.75	180413-2113	180155-0133	180154-0105				



ISO VIEW 1
SCALE 1:1

P/N 180414-1113 HOLDER ASSEMBLY
(0.90 POCKET DEPTH)



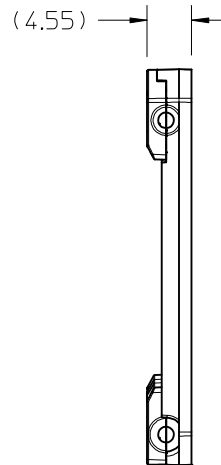
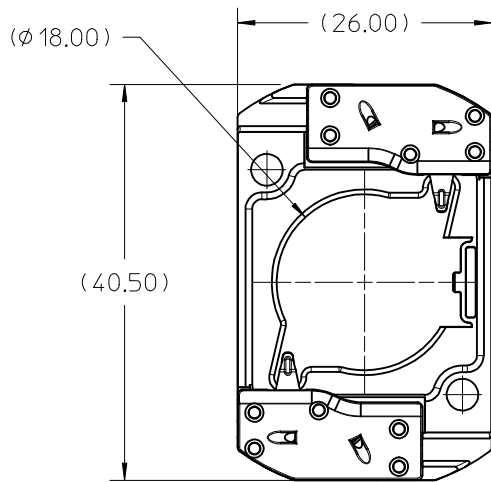
PART MARKED WITH
DATE CODE (YYWWD)
MFG PLANT (CD)
REVISION (X)
PART NUMBER (180414-1113)

- NOTES:
1. MATERIALS: HOUSING AND CAPS: POLYESTER PBT GLASS FILLED; COLOR: WHITE; TERMINAL: COPPER ALLOY
 2. FINISHES: TERMINAL CONTACT: SELECT GOLD OVER NICKEL WIRE TRAP: SELECT TIN OVER NICKEL
 3. PRODUCT SPECIFICATION: 180414-0000-PS
 4. PACKAGING SPECIFICATION: PK-180419-006
 5. UL:OLFB2 UL496 FILE NO. E345583
 6. ELV AND ROHS COMPLIANT
 7. FOR USE WITH: 19.0 MM X 19.0 MM COB LED
 8. WIRE GAUGE: 18, 20, AND 22 AWG, SOLID OR STRANDED WITH TIN OVERCOAT. STRIP LENGTH 10MM +2.0/-0.0MM.
 9. ALL DIMENSIONS IN PARENTHESES (XX.XX) ARE FOR REFERENCE ONLY

ENTER DESCRIPTION EC NO: SSL2017-0024 DRWN:LZABJANOVSKI 2017/02/21 CHKD: APPR:BPISZCZOR 2017/03/07 REV B4	QUALITY SYMBOLS	GENERAL TOLERANCES (UNLESS SPECIFIED)	DIMENSION STYLE	SCALE	DESIGN UNITS	THIRD ANGLE PROJECTION
	$\nabla F/0$ $\nabla E/0$ $\nabla F/0$	mm	MM ONLY	2:1	METRIC	COB LED HOLDER ASSEMBLY 19.0 MM X 19.0 MM SQUARE molex
		INCH	DRAWN BY	DATE	TITLE	
		4 PLACES ± --- ± --- 3 PLACES ± --- ± --- 2 PLACES ± 0.13 ± --- 1 PLACE ± 0.25 ± --- 0 PLACE ± --- ± --- ANGULAR ± 1/2°	MCOLE 2013/12/09 CHECKED BY DATE MCOLE 2013/12/09 APPROVED BY DATE DMCGOWAN 2013/12/09	SD-180414-113 DOCUMENT NO.		
DRAFT WHERE APPLICABLE MUST REMAIN WITHIN DIMENSIONS	SIZE B	SEE CHART	THIS DRAWING CONTAINS INFORMATION THAT IS PROPRIETARY TO MOLEX INCORPORATED AND SHOULD NOT BE USED WITHOUT WRITTEN PERMISSION		SHEET NO. 1 OF 6	

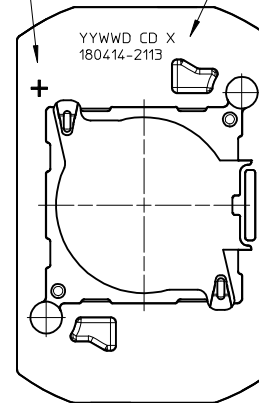
10 9 8 7 6 5 4 3 2 1

P/N 180414-2113 HOLDER ASSEMBLY (0.75 POCKET DEPTH)



PART MARKED WITH POLARITY SIGN "+"

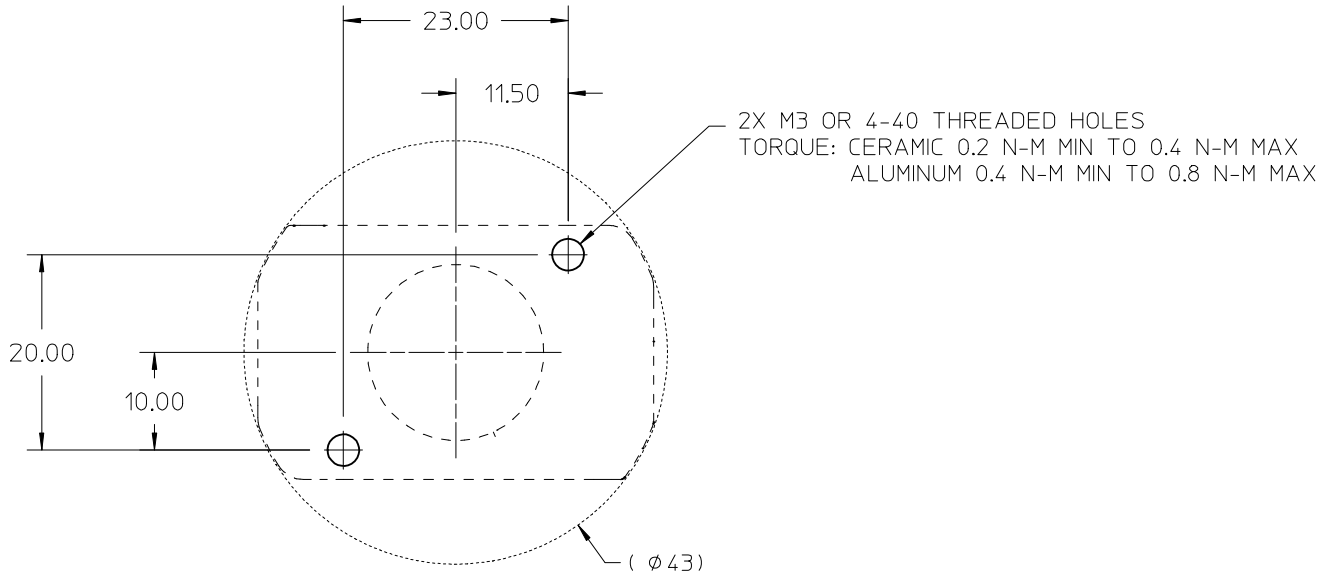
PART MARKED WITH DATE CODE (YYWWD)
MFG PLANT (CD)
REVISION (X)
PART NUMBER (180414-2113)



ENTER DESCRIPTION EC NO: SSL2017-0024 DRWNL: ZAB.JANOVSKI 2017/02/21 CHKD: APPR: BPT.SZCZOR 2017/03/07 REV	QUALITY SYMBOLS $\nabla F=0$ $\nabla F=0$ $\nabla F=0$	GENERAL TOLERANCES (UNLESS SPECIFIED) mm INCH 4 PLACES ± --- ± --- 3 PLACES ± --- ± --- 2 PLACES ± 0.13 ± --- 1 PLACE ± 0.25 ± --- 0 PLACE ± --- ± --- ANGULAR ± 1/2°	DIMENSION STYLE MM ONLY DRAWN BY DATE MCOLE 2013/12/09 CHECKED BY DATE MCOLE 2013/12/09 APPROVED BY DATE DMCGOWAN 2013/12/09 MATERIAL NO.	SCALE 2:1 DESIGN UNITS METRIC THIRD ANGLE PROJECTION	TITLE COB LED HOLDER ASSEMBLY 19.0 MM X 19.0 MM SQUARE molex DOCUMENT NO. SD-180414-113 SHEET NO. 2 OF 6
	DRAFT WHERE APPLICABLE MUST REMAIN WITHIN DIMENSIONS	SEE CHART	THIS DRAWING CONTAINS INFORMATION THAT IS PROPRIETARY TO MOLEX INCORPORATED AND SHOULD NOT BE USED WITHOUT WRITTEN PERMISSION		
	B4	B	B		

9 8 7 6 5 4 3 2 1

10 9 8 7 6 5 4 3 2 1



2X M3 OR 4-40 THREADED HOLES
TORQUE: CERAMIC 0.2 N-M MIN TO 0.4 N-M MAX
ALUMINUM 0.4 N-M MIN TO 0.8 N-M MAX

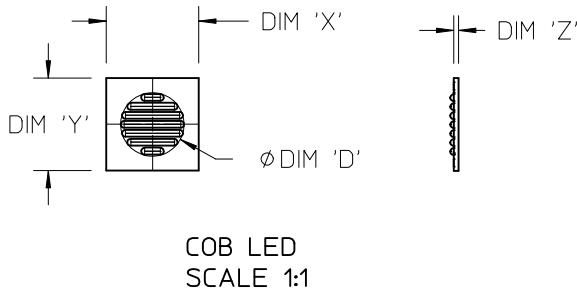
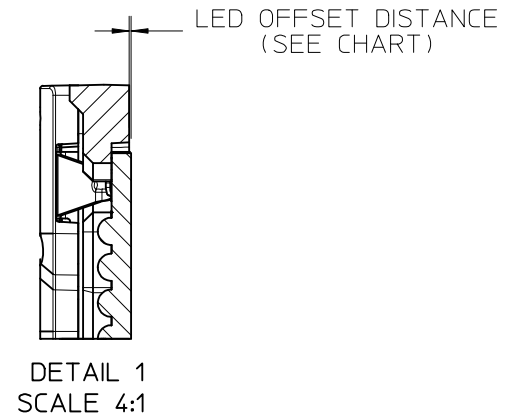
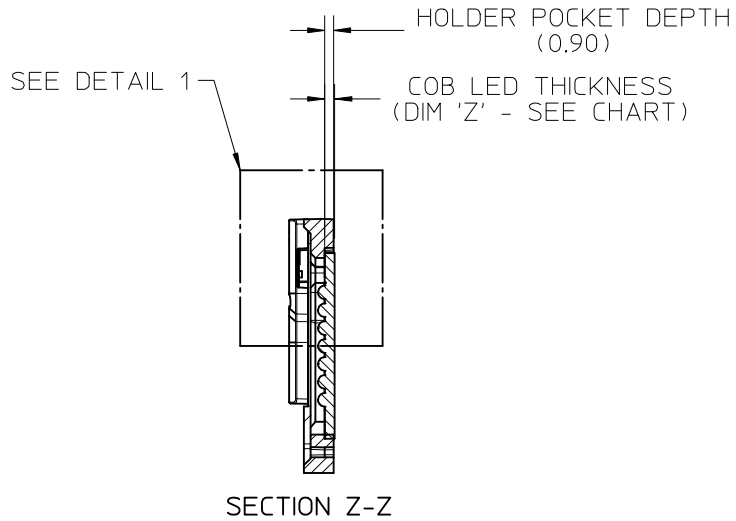
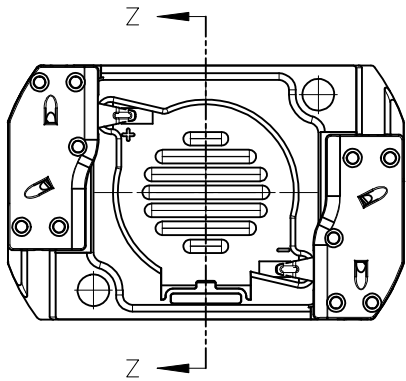
RECOMMENDED MOUNTING DIMENSIONIS

ENTER DESCRIPTION EC NO: SSL2017-0024 DRWNL:ZAB.JANOVSKI 2017/02/21 CHKD: APPR:BPISZCZOR 2017/03/07 REV B4	QUALITY SYMBOLS	GENERAL TOLERANCES (UNLESS SPECIFIED)		DIMENSION STYLE MM ONLY		SCALE 2:1	DESIGN UNITS METRIC	THIRD ANGLE PROJECTION	
	$\nabla = 0$	mm	INCH	DRAWN BY	DATE	TITLE COB LED HOLDER ASSEMBLY 19.0 MM X 19.0 MM SQUARE			
	$\nabla = 0$	4 PLACES \pm ---	\pm ---	MCOLE	2013/12/09				
	$\nabla = 0$	3 PLACES \pm ---	\pm ---	CHECKED BY	DATE	DOCUMENT NO. SD-180414-113			
	$\nabla = 0$	2 PLACES ± 0.13	\pm ---	MCOLE	2013/12/09				
$\nabla = 0$	1 PLACE ± 0.25	\pm ---	APPROVED BY	DATE	SHEET NO. 3 OF 6				
$\nabla = 0$	0 PLACE \pm ---	\pm ---	DMCGOWAN	2013/12/09					
ANGULAR $\pm 1/2^\circ$		DRAFT WHERE APPLICABLE MUST REMAIN WITHIN DIMENSIONS		MATERIAL NO. SEE CHART		THIS DRAWING CONTAINS INFORMATION THAT IS PROPRIETARY TO MOLEX INCORPORATED AND SHOULD NOT BE USED WITHOUT WRITTEN PERMISSION			

9 8 7 6 5 4 3 2 1

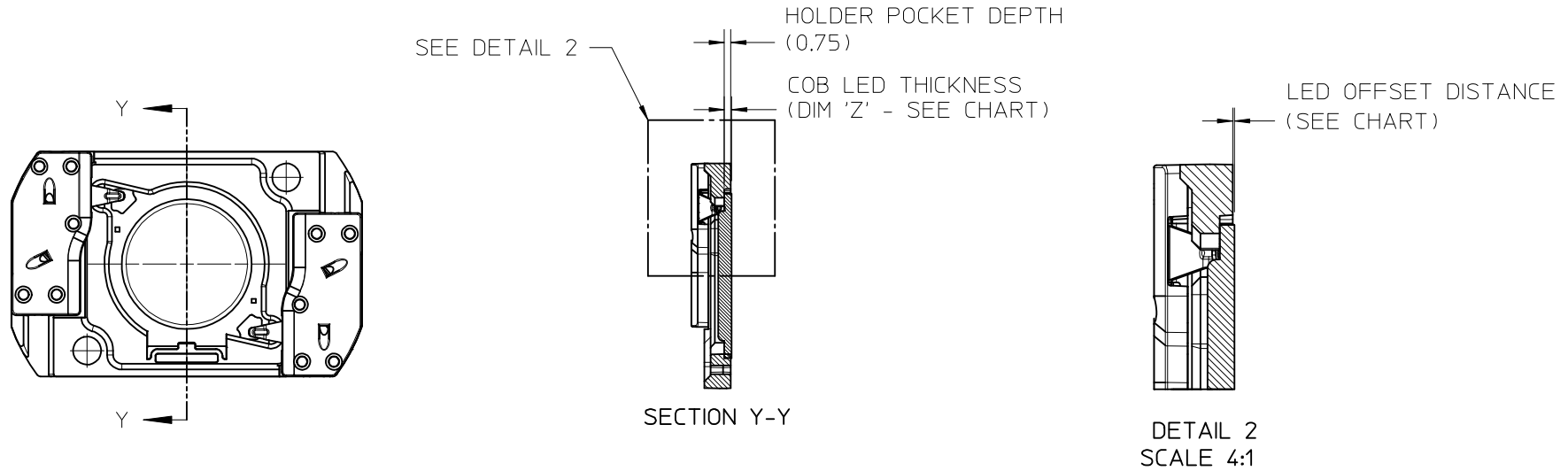
10	9	8	7	6	5	4	3	2	1
COB MFG	TYPE		DIM 'X'	DIM 'Y'	DIM 'Z'	DIM 'D'	OFFSET		
VOSSLOH-SCHWABE	DMC114C		19.0	19.0	1.0	11.9	0.10		
VOSSLOH-SCHWABE	DMC124***F, DMC125***F		19.0	19.0	1.0	13.1	0.10		
VOSSLOH-SCHWABE	DMC125C		19.0	19.0	1.0	13.1	0.10		
VOSSLOH-SCHWABE	DMC128***F		19.0	19.0	1.0	15.8	0.10		

ILLUSTRATION OF P/N 180414-1113 HOLDER MATED WITH LED



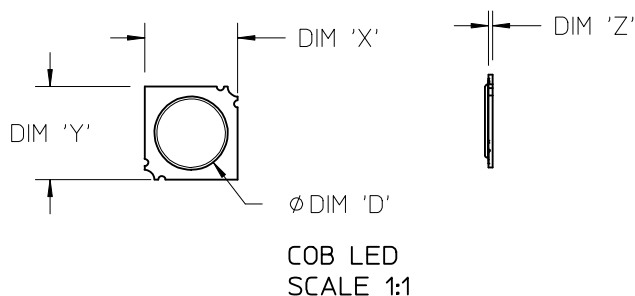
ENTER DESCRIPTION EC NO: SSL2017-0024 DRWNL:ZAB.JANOVSKI 2017/02/21 CHKD: APPR:BPISZCZOR 2017/03/07 B4	QUALITY SYMBOLS $\nabla F=0$ $\nabla E=0$ $\nabla F=0$	GENERAL TOLERANCES (UNLESS SPECIFIED)		DIMENSION STYLE MM ONLY		SCALE 2:1	DESIGN UNITS METRIC	THIRD ANGLE PROJECTION		
				DRAWN BY MCOLE	DATE 2013/12/09	TITLE COB LED HOLDER ASSEMBLY 19.0 MM X 19.0 MM SQUARE				
				CHECKED BY MCOLE	DATE 2013/12/09					
				APPROVED BY DMCGOWAN	DATE 2013/12/09	MATERIAL NO. SEE CHART		DOCUMENT NO. SD-180414-113		SHEET NO. 4 OF 6
		ANGULAR $\pm 1/2^\circ$ DRAFT WHERE APPLICABLE MUST REMAIN WITHIN DIMENSIONS		SIZE B		THIS DRAWING CONTAINS INFORMATION THAT IS PROPRIETARY TO MOLEX INCORPORATED AND SHOULD NOT BE USED WITHOUT WRITTEN PERMISSION				

ILLUSTRATION OF P/N 180414-2113 HOLDER MATED WITH LED



ENTER DESCRIPTION EC NO: SSL2017-0024 DRWNL:ZAB.JANOVSKI 2017/02/21 CHKD: APPR:BPISZCZOR 2017/03/07 REV B4	QUALITY SYMBOLS	GENERAL TOLERANCES (UNLESS SPECIFIED)	DIMENSION STYLE	SCALE	DESIGN UNITS	THIRD ANGLE PROJECTION	
	$\nabla = 0$ $\nabla = 0$ $\nabla = 0$	mm	INCH	MM ONLY	2:1	METRIC	COB LED HOLDER ASSEMBLY 19.0 MM X 19.0 MM SQUARE molex
		4 PLACES	± ---	± ---	DRAWN BY	DATE	
		3 PLACES	± ---	± ---	MCOLE	2013/12/09	
	2 PLACES	± 0.13	± ---	CHECKED BY	DATE		
	1 PLACE	± 0.25	± ---	MCOLE	2013/12/09		
	0 PLACE	± ---	± ---	APPROVED BY	DATE		
		ANGULAR	± 1/2°	DMCGOWAN	2013/12/09		
		DRAFT WHERE APPLICABLE	MUST REMAIN WITHIN DIMENSIONS	MATERIAL NO.	SEE CHART	DOCUMENT NO.	
				SIZE	B	SD-180414-113	
				THIS DRAWING CONTAINS INFORMATION THAT IS PROPRIETARY TO MOLEX INCORPORATED AND SHOULD NOT BE USED WITHOUT WRITTEN PERMISSION		SHEET NO.	
						5 OF 6	

COB MFG	TYPE	DIM 'X'	DIM 'Y'	DIM 'Z'	DIM 'D'	OFFSET
CITIZEN	CLL030, CLL032, CLU034, CLU036, CLU038	19.0	19.0	0.90	17.0	0.15
SEOUL	ZC12, ZC18	19.0	19.0	0.90	16.0	0.15
TRIDONIC	SLE G5 LES15	19.0	19.0	0.90	15.0	0.15
CITIZEN	CLU720, CLU721	19.0	19.0	0.90	13.5	0.15
EVERLIGHT	EAHP1919WA*, EAHP1919WB*, EAHP1919WC*	19.0	19.0	0.90	15.5	0.15
EVERLIGHT	EA1919 36V/16W	19.0	19.0	0.90	15.5	0.15
EVERLIGHT	EA1919 36V/19W	19.0	19.0	0.90	15.5	0.15
EVERLIGHT	EA1919 36V/26W	19.0	19.0	0.90	15.5	0.15
VOSSLOH-SCHWABE	DMC114C	19.0	19.0	1.00	11.9	0.25
VOSSLOH-SCHWABE	DMC124***F, DMC125***F	19.0	19.0	1.00	13.1	0.25
VOSSLOH-SCHWABE	DMC125C	19.0	19.0	1.00	13.1	0.25
VOSSLOH-SCHWABE	DMC128***F	19.0	19.0	1.00	15.8	0.25
BRIDGELUX	H15	19.0	19.0	1.10	16.5	0.35



ENTER DESCRIPTION EC NO: SSL2017-0024 DRWNL:ZAB.JANOVSKI 2017/02/21 CHKD: APPR:BP1SZCZOR 2017/03/07 REV	QUALITY SYMBOLS =0 =0	GENERAL TOLERANCES (UNLESS SPECIFIED)		DIMENSION STYLE MM ONLY		SCALE 2:1	DESIGN UNITS METRIC	THIRD ANGLE PROJECTION			
			mm	INCH	DRAWN BY	DATE	TITLE COB LED HOLDER ASSEMBLY 19.0 MM X 19.0 MM SQUARE				
					MCOLE	2013/12/09					
			4 PLACES	± ---	± ---	CHECKED BY	DATE				
			3 PLACES	± ---	± ---	MCOLE	2013/12/09				
		2 PLACES	± 0.13	± ---	APPROVED BY	DATE					
		1 PLACE	± 0.25	± ---	DMCGOWAN	2013/12/09	DOCUMENT NO. SD-180414-113		SHEET NO. 6 OF 6		
		0 PLACE	± ---	± ---	MATERIAL NO. SEE CHART						
		ANGULAR ±1/2°		DRAFT WHERE APPLICABLE MUST REMAIN WITHIN DIMENSIONS							
THIS DRAWING CONTAINS INFORMATION THAT IS PROPRIETARY TO MOLEX INCORPORATED AND SHOULD NOT BE USED WITHOUT WRITTEN PERMISSION											