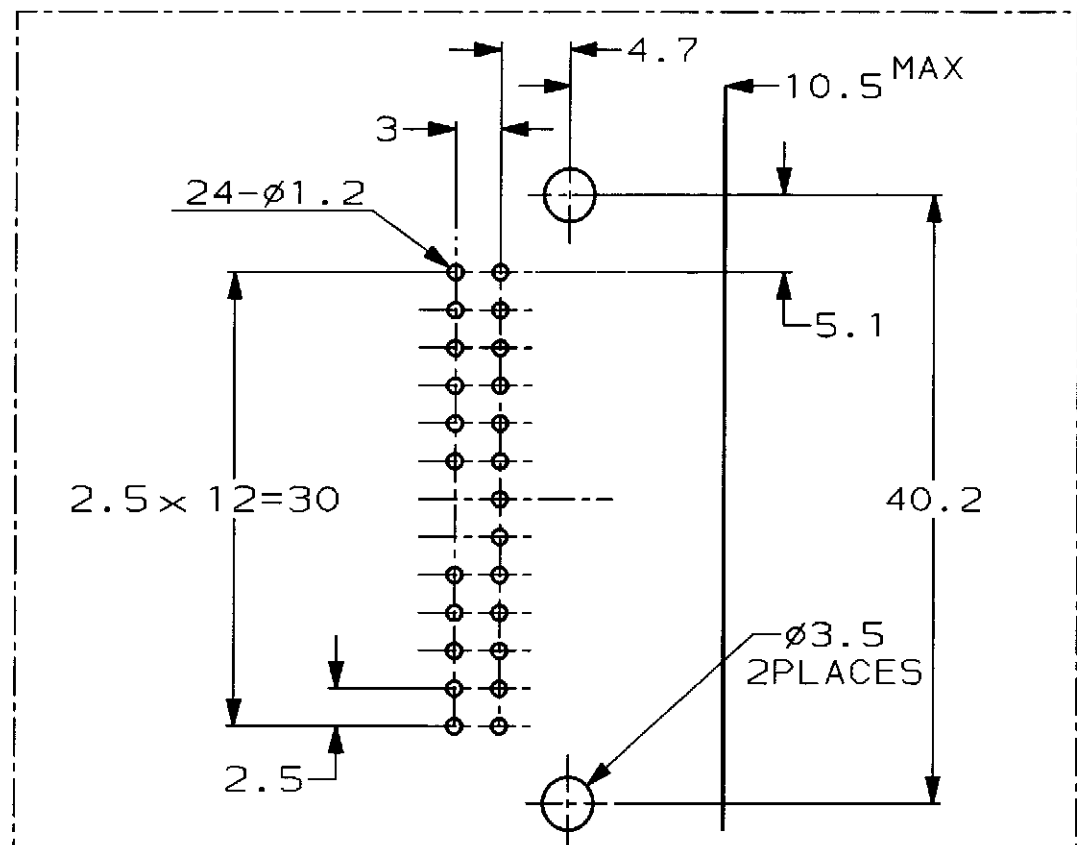
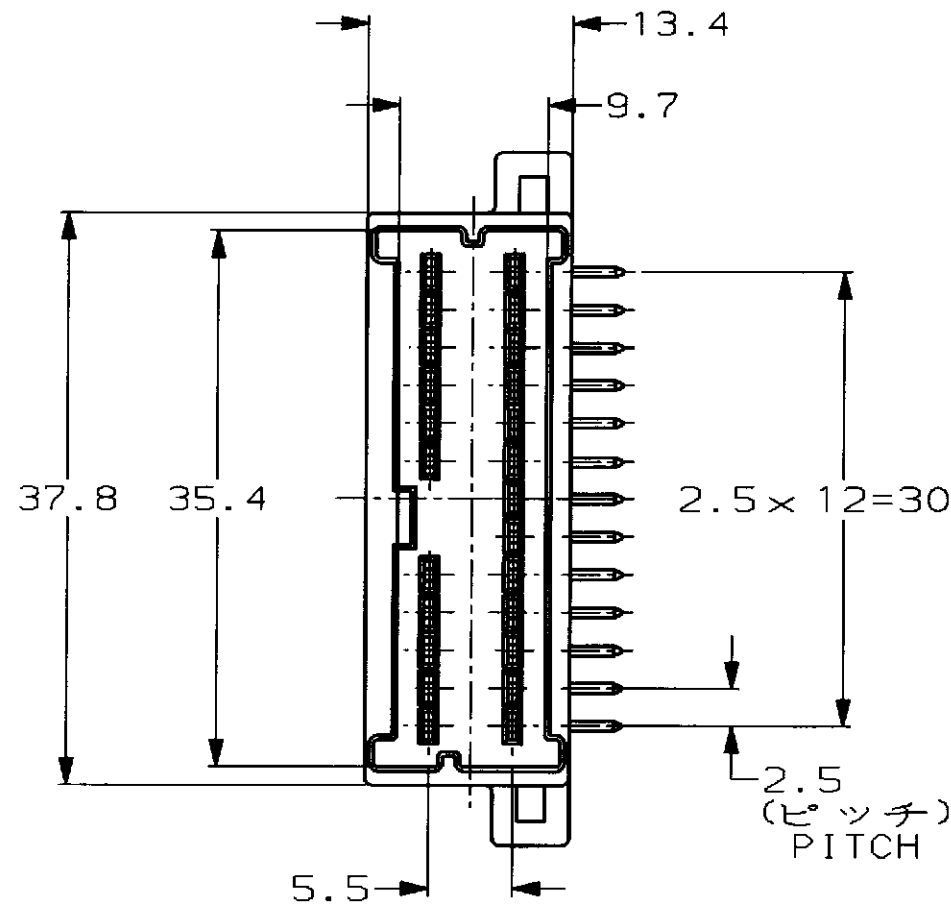
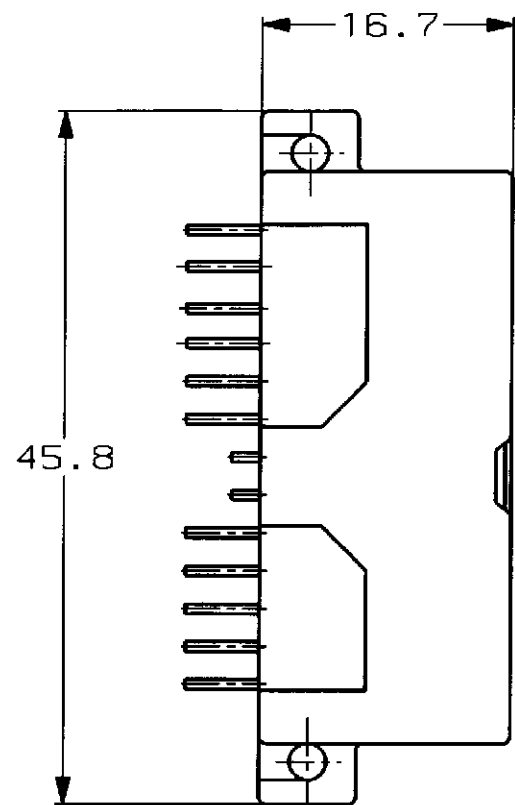


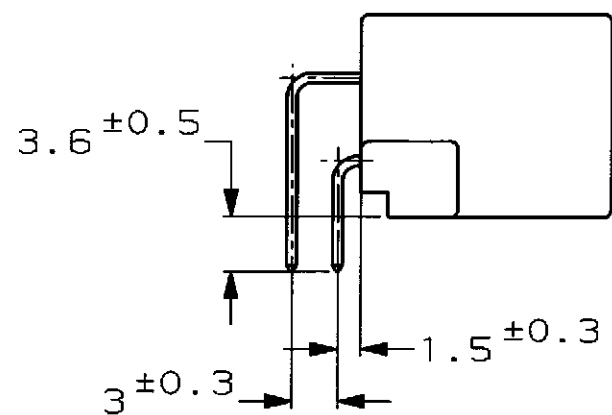
P	LTR	DESCRIPTION	ECN	DATE	DWN	APVD
A		再作成 REDRAWN	FJ00-0506-98	APR 27 1998		



MOUNTING DIMENSIONS FOR P.C. BOARD  
プリント基板取付け寸法

(TOLERANCES: ±0.1  
PITCH TOLERANCES MUST NOT ACCUMULATE.)  
(公差: ±0.1 ピッチ公差は累積されないこと)

P.C. BOARD THICKNESS  
基板厚: 1.6mm



1 RECOMMENDED MOUNTING SCREW: PAN-HEADED, TYPE 2 TAPPING SCREW OF 3DIA X 6LENGTH (JIS B1115, B1122), TIGHTENING TORQUE: 39.2N-cm [4Kg-cm] MAX

1 推奨取付ネジ: JIS B1115, B1122タッピングねじ, なべ2種, 呼び径3, 長さ6, 締付トルク: 39.2N-cm [4Kg-cm] 以下

1123391-3	茶色 (BROWN)	1123433-3
嵌合相手ハウジング型番 MATING HOUSING PART NUMBER	色 (COLOR)	型番 PART NUMBER

THIS DRAWING IS A CONTROLLED DOCUMENT FOR AMP INCORPORATED. IT IS SUBJECT TO CHANGE AND THE CONTROLLING ENGINEERING ORGANIZATION SHOULD BE CONTACTED FOR THE LATEST REVISION.		AMP 日本エー・エム・シー株式会社 Kawasaki, Japan	
DIMENSIONS: 単位: 概 mm	TOLERANCES UNLESS OTHERWISE SPECIFIED 一般公差 10mm: ±0.2 30mm: ±0.25 100mm: ±0.3 ANGLE: ±0.3°	NAME 040III MULTILOCK CONNECTOR 24POS CAP HOUSING ASSEMBLY WIRE TO BOARD (H) TYPE	APVD CHK PRODUCT SPEC 108-5603 APPLICATION SPEC 取付適用規格
MATERIAL 材料 PBT	FINISH 仕上	SIZE A3	CAGE CODE 00779
CUSTOMER DRAWING		DRAWING NO 1123433	RESTRICTED TO -