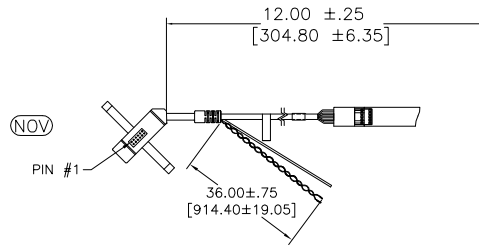
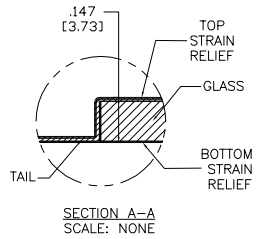
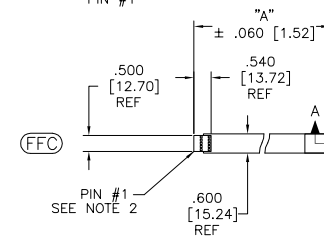
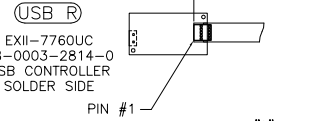
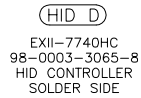
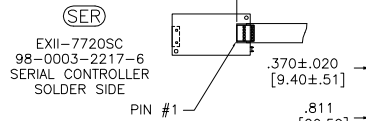
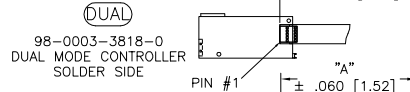


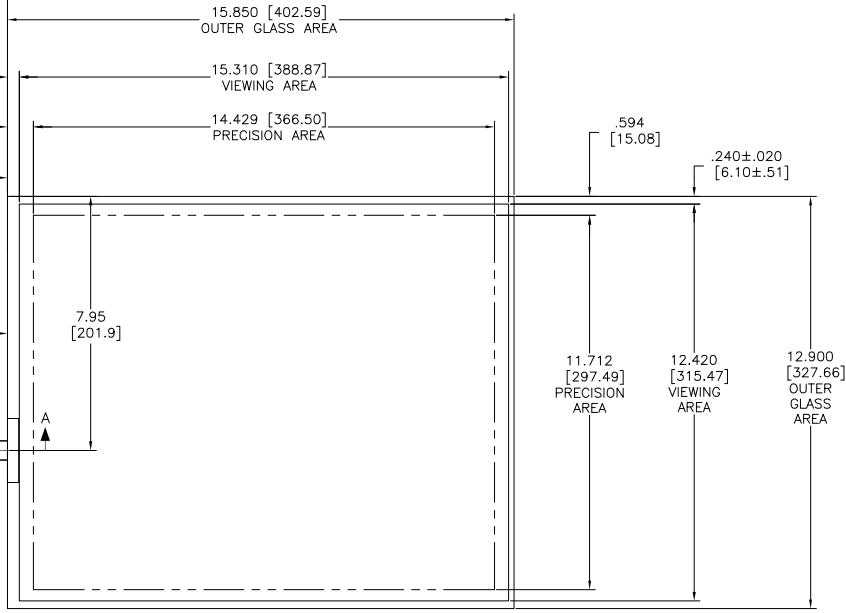
OGA DIAGONAL: 20.44 [519.08]  
 VA DIAGONAL: 19.71 [500.74]  
 PA DIAGONAL: 18.58 [472.03]



ESD CLAMHELL CASE IS USED WITH ALL NOV, USB AND SER TERMINATIONS.



| TOP LEVEL NUMBER | US NUMBER      | TYPE  | DIM "A" (TOTAL GLASS TO CONNECTOR) | A/G FINISH | PROD SPEC |
|------------------|----------------|-------|------------------------------------|------------|-----------|
| 17-8051-203      | 98-0003-2532-8 | FFC   | 4.27" [108.46]                     | AG500      | 23655     |
| 17-8051-205      | 98-0003-2185-5 | FFC   | 8.00" [203.20]                     | AG500      | 23655     |
| 17-8051-206      | 98-0003-2186-3 | NOV   | SEE DWG                            | AG500      | 23655     |
| 17-8051-221      | 98-0003-2537-7 | SER   | 4.27" [108.46]                     | AG500      | 23655     |
| 17-8051-227      | 98-0003-2927-0 | SER   | 8.00" [203.20]                     | AG500      | 23655     |
| 17-8051-218      | 98-0003-2535-1 | USB R | 4.27" [108.46]                     | AG500      | 23655     |
| 17-8051-226      | 98-0003-3114-4 | USB R | 8.00" [203.20]                     | AG500      | 23655     |
| N/A              | 98-0003-3535-0 | HID D | 8.00" [203.20]                     | AG500      | 23655     |
| N/A              | 98-0003-3199-5 | HID M | 8.00" [203.20]                     | AG500      | 23655     |
| N/A              | 98-0003-3413-0 | SER   | 6.00" [152.40]                     | AG500      | 23655     |
| N/A              | 98-0003-3421-3 | SER   | 6.00" [152.40]                     | WC100      | 34523     |
| N/A              | 98-0003-3422-1 | USB   | 6.00" [152.40]                     | WC100      | 34523     |
| N/A              | 98-0003-3423-9 | FFC   | 6.00" [152.40]                     | WC100      | 34523     |
| N/A              | 98-0003-3973-3 | DUAL  | 8.00" [203.20]                     | AG500      | 23655     |
| N/A              | 98-1100-0104-1 | USB R | 8.00" [203.20]                     | WC100      | 34523     |
| N/A              | 98-1100-0103-3 | FFC   | 8.00" [203.20]                     | WC100      | 34523     |



- NOTES:
- WEIGHT OF GLASS IN GRAMS: 1005±10%
  - NICOMATIC HOUSING P/N: OLO5  
 NICOMATIC RECEPTACLES (PINS) MATTE TIN PLATED P/N: 14106-12  
 HOUSING ORIENTED WITH LATCH DOWN

| PINOUT |        |
|--------|--------|
| 1      | LR     |
| 2      | LL     |
| 3      | SHIELD |
| 4      | UL     |
| 5      | UR     |

| UNITS                                 | INCHES [MM] |
|---------------------------------------|-------------|
| TOLERANCES UNLESS OTHERWISE SPECIFIED |             |
| .X                                    | ±           |
| .XX                                   | ±.03 [.76]  |
| .XXX                                  | ±.015 [.38] |
| ANGLES                                | ±1°         |

**3M** 3M TOUCH SYSTEMS  
 METHUEN, MA  
 USA

© COPYRIGHT 2005  
 THIS DOCUMENT IS COPYRIGHTED PROPERTY OF THE 3M COMPANY AND MAY NOT BE REPRODUCED WITHOUT 3M WRITTEN PERMISSION OR USED OR DISCLOSED FOR OTHER THAN 3M AUTHORIZED PURPOSES.

THIRD ANGLE PROJECTION

DO NOT SCALE DRAWING

SCALE 1 = 1

| REV | CHANGE NOTICE         | DATE | DRW |
|-----|-----------------------|------|-----|
| U   | REVISED PER CO 036265 | 4/13 | SB  |
| T   | REVISED PER CO 036101 | 2/13 | SB  |

TITLE  
 MARKETING DRAWING  
 SCT32NN 19.71"

DRAWN K. CROWLEY 9/05

CAD FORMAT AUTOCAD SHEET 1 OF 1

SIZE C DOCUMENT NO. TSD-28177 REV U