

NOTES:
 1. REFER TO HEADER DRAWING 92140 AND EJECT MECHANISM 95079 FOR ADDITIONAL DIMENSIONS, MATERIAL, AND PLATING INFORMATION.

| | | | | | | | | | |
|---------------|-----------------|---|-------|--|---|--------------------------|---|----------------------|---|
| mat'l. code | | surface <input checked="" type="checkbox"/> ISO1302 | | tolerance <input checked="" type="checkbox"/> ISO1101 <input checked="" type="checkbox"/> ISO406 | | projection | | product family | |
| l trechn nodr | | date | | tolerances unless otherwise specified | | MM | | MCS | |
| L | V20418 LP | 3/1/02 | angle | 0.X±0.3 | | | | 5V EJECT HEADER ASSY | |
| M | N05-0054 WB | 03/01/05 | 0°±2' | 0.XX±0.13 | | | | | |
| N | BLX-N-011441 ZK | 04/02/12 | | 0.XXX±0.051 | | scale 1:1 | | | |
| | | dr | | D.SHEAFFER | | 11/17/94 | | dwg no | |
| | | enr | | D.BRANN | | 12/7/94 | | sheet 1 of 9 | |
| | | chr | | D.BRANN | | 12/7/94 | | 95620 | |
| | | appd | | D.BRANN | | 12/7/94 | | A4 | |
| sheet index | | revision | | type | | Product Customer Drawing | | | |
| | | 1 | 2 | 3 | 4 | 5 | 6 | 7 | 8 |
| | | | | | | | | | |

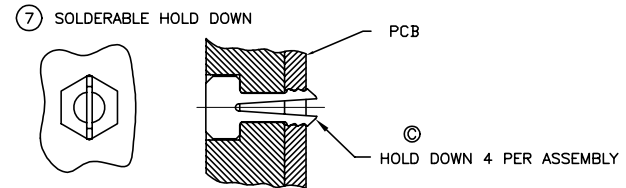
DESCRIPTION: ABOVE P.C.B., DECK AND PUSH-ROD LOCATION ARE AS VIEWED BY USER.

| PRODUCT NO. 95620-XXXX | PUSH ROD LOCATION | SOLDER TAIL ⑤ | STAND-OFF HEIGHT DIM "L" | EJ. HEADER ASSY 92140-XXX ④ | EJ. MECHANISM ASSY 95079-XXXX ⑥ | SOLDERABLE HOLD DOWN (4) ⑦ | MOUNTING STYLE TO PCB AND PUSH-ROD LOCATION | USED WITH/COMMENTS |
|---------------------------|----------------------|---------------------|--------------------------------|--------------------------------------|--|----------------------------------|---|-----------------------|
| 000CA | RIGHT | R/A | 0.0 | 000 | 00CA | | | |
| 000CAH ⑦ | RIGHT | R/A | 0.0 | 000 | 00CA | 93925-001 | | |
| 001CA | RIGHT | SMT-STG | 0.0 | 001 | 00CA | | | |
| 002CA | RIGHT | SMT-IL | 0.0 | 002 | 00CA | | | |
| 020CA | RIGHT | R/A | 2.0 | 040 | 02CA | | | |
| 040CA | RIGHT | R/A | 4.0 | 010 | 04CA | | | |
| 050CA | RIGHT | R/A | 5.0 | 020 | 05CA | | | |
| 050CAH ⑦ | RIGHT | R/A | 5.0 | 020 | 05CA | 93925-004 | | |
| 100CA | LEFT | R/A | 0.0 | 000 | 10CA | | | |
| 100CAH ⑦ | LEFT | R/A | 0.0 | 000 | 10CA | 93925-001 | | |
| 101CA | LEFT | SMT-STG | 0.0 | 001 | 10CA | | | |
| 102CA | LEFT | SMT-IL | 0.0 | 002 | 10CA | | | |
| 120CA | LEFT | R/A | 2.0 | 040 | 12CA | | | |
| 140CA | LEFT | R/A | 4.0 | 010 | 14CA | | | |
| 150CA | LEFT | R/A | 5.0 | 020 | 15CA | | | |
| 005CA | RIGHT | R/A | 0.0 | 005 | 00CA | | | |
| 025CA | RIGHT | R/A | 0.0 | 045 | 00CA | | | 95620-020CA or -120CA |
| 105CA | LEFT | R/A | 0.0 | 005 | 10CA | | | 95620-000CA or -100CA |
| 125CA | LEFT | R/A | 0.0 | 045 | 10CA | | | 95620-020CA or -120CA |

NOTES:

- MATERIAL:
 - HEADER ASSY:
PLASTIC HOUSING: HIGH TEMPERATURE THERMOPLASTIC UL94V-0 BLACK - ABOVE PCB
HIGH TEMPERATURE THERMOPLASTIC UL94V-0 (WHITE) - BELOW PCB
PIN: PHOSPHOR BRONZE
 - EJECT MECHANISM ASSY:
PLASTIC GUIDE: HIGH TEMPERATURE THERMOPLASTIC UL94V-0 BLACK
PLASTIC PUSH-ROD BUTTON: HIGH TEMPERATURE THERMOPLASTIC UL94V-0 BLACK
COVER PLATE, EJECT PLATE, LINK ARM,
PUSH ROD: STAINLESS STEEL
EMI CONTACT: PHOSPHOR BRONZE
 - FINISH (PIN)
UNDER PLATING: 0.5um Ni
CONTACT AREA: 0.076 μm MIN. GOLD
SOLDER TAIL: 2.5um Sn-Pb
- ③ DIM "X"
- | | | |
|---------|--------|------------------|
| 4.25±.1 | 3.5±.1 | 5.0±.1 |
| OTHERS | 36,67 | 1,17,34,35,51,68 |
- RECOMMENDED HOLD DOWN - 2mm SCREWS (95121-XXX) AND HEXNUTS (92869-001). RECOMMENDED SCREW TORQUE: 1.0 TO 1.5 MAX in-lbs. (1.2-1.7 cm-kgs).
 - SOLDER TAIL KEY/PCB LAYOUT:
R/A = RIGHT ANGLE PIN-THROUGH-HOLE-PAGE 6
SMT-STG = STAGGERED SURFACE MOUNT-PAGE 7
SMT-IL = SURFACE MOUNT IN-LINE (SINGLE ROW)-PAGE 8

6. BOARD KEEP OUT ZONE- PAGE 9



8. PRODUCT SPEC:110-263

| | | | | |
|--------------|----------------------|---------------------------------------|-----------------|----------------------------------|
| mat'l. code | surface ISO1302 ✓ | tolerance ISO1101 ISO406 | projection ④ | product family MCS |
| ltr ecn nodr | date | tolerances unless otherwise specified | MM | title 5V EJECT HEADER ASSY |
| N | | angle 0°±2' | scale 1:1 | dwg no 95620 |
| | | dr D.SHEAFFER 11/17/94 | | sheet 2 of 9 |
| | | enr D.BRANN 12/7/94 | | size A4 |
| | | chr D.BRANN 12/7/94 | | type Product Customer Drawing |
| | | appd D.BRANN 12/7/94 | | |
| sheet index | revision sheet | | | |

DESCRIPTION: ABOVE P.C.B., DECK AND PUSH-ROD LOCATION ARE AS VIEWED BY USER.

| PRODUCT NO. 95620-XXXX | PUSH ROD LOCATION | SOLDER TAIL ⑤ | STAND-OFF HEIGHT DIM "L" | EJ. HEADER ASSY 92140-XXX ① | EJ. MECHANISM ASSY 95079-XXXX ② | SOLDERABLE HOLD DOWN (4) ③ | MOUNTING STYLE TO PCB AND PUSH-ROD LOCATION | USED WITH/COMMENTS |
|---------------------------|----------------------|---------------------|--------------------------------|--------------------------------------|--|----------------------------------|---|---------------------------|
| 000CALF | RIGHT | R/A | 0.0 | 000LF | 00CA | | | |
| 000CAHLF ⑩ | RIGHT | R/A | 0.0 | 000LF | 00CA | 93925-001 | | |
| 001CALF | RIGHT | SMT-STG | 0.0 | 001LF | 00CA | | | |
| 002CALF | RIGHT | SMT-IL | 0.0 | 002LF | 00CA | | | |
| 020CALF | RIGHT | R/A | 2.0 | 040LF | 02CA | | | |
| 040CALF | RIGHT | R/A | 4.0 | 010LF | 04CA | | | |
| 050CALF | RIGHT | R/A | 5.0 | 020LF | 05CA | | | |
| 050CAHLF ⑩ | RIGHT | R/A | 5.0 | 020LF | 05CA | 93925-004 | | |
| 100CALF | LEFT | R/A | 0.0 | 000LF | 10CA | | | |
| 100CAHLF ⑩ | LEFT | R/A | 0.0 | 000LF | 10CA | 93925-001 | | |
| 101CALF | LEFT | SMT-STG | 0.0 | 001LF | 10CA | | | |
| 102CALF | LEFT | SMT-IL | 0.0 | 002LF | 10CA | | | |
| 120CALF | LEFT | R/A | 2.0 | 040LF | 12CA | | | |
| 140CALF | LEFT | R/A | 4.0 | 010LF | 14CA | | | |
| 150CALF | LEFT | R/A | 5.0 | 020LF | 15CA | | | |
| 005CALF | RIGHT | R/A | 0.0 | 005LF | 00CA | | | 95620-000CALF or -100CALF |
| 025CALF | RIGHT | R/A | 0.0 | 045LF | 00CA | | | 95620-020CALF or -120CALF |
| 105CALF | LEFT | R/A | 0.0 | 005LF | 10CA | | | 95620-000CALF or -100CALF |
| 125CALF | LEFT | R/A | 0.0 | 045LF | 10CA | | | 95620-020CALF or -120CALF |

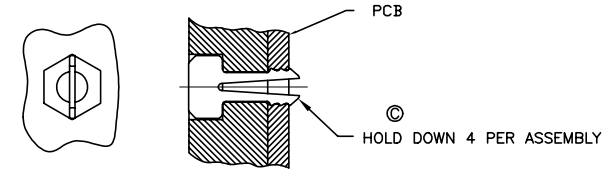
NOTES:

- MATERIAL:
 - 1.1 HEADER ASSY:
 - PLASTIC HOUSING: HIGH TEMPERATURE THERMOPLASTIC UL94V-0 BLACK - ABOVE PCB
 - PLASTIC GUIDE: HIGH TEMPERATURE THERMOPLASTIC UL94V-0 (WHITE) - BELOW PCB
 - PIN: PHOSPHOR BRONZE
 - 1.2 EJECT MECHANISM ASSY:
 - PLASTIC GUIDE: HIGH TEMPERATURE THERMOPLASTIC UL94V-0 BLACK
 - PLASTIC PUSH-ROD BUTTON: HIGH TEMPERATURE THERMOPLASTIC UL94V-0 BLACK
 - COVER PLATE, EJECT PLATE, LINK ARM, PUSH ROD: STAINLESS STEEL
 - EMI CONTACT: PHOSPHOR BRONZE
- FINISH (PIN)
 - UNDER PLATING: 0.5um Ni
 - CONTACT AREA: 0.076 μm MIN. GOLD
- SOLDER TAIL: 2.5um Sn-Pb

| | | | |
|---------|---------|------------------|--------|
| DIM "X" | 4.25±.1 | 3.5±.1 | 5.0±.1 |
| OTHERS | 36,67 | 1,17,34,35,51,68 | |
- RECOMMENDED HOLD DOWN - 2mm SCREWS (95121-XXX) AND HEXNUTS (92869-001), RECOMMENDED SCREW TORQUE: 1.0 TO 1.5 MAX in-lbs. (1.2-1.7 cm-kgs).
- SOLDER TAIL KEY/PCB LAYOUT:
 - R/A = RIGHT ANGLE PIN-THROUGH-HOLE-PAGE 6
 - SMT-STG = STAGGERED SURFACE MOUNT-PAGE 7
 - SMT-IL = SURFACE MOUNT IN-LINE (SINGLE ROW)-PAGE 8
- IF LEAD FREE P/N. THE HOUSING WILL WITHSTAND EXPOSURE TO 260°C PEAK TEMPERATURE SOLDER TAIL : SMT-IL, SMT-STG CAN RESIST 40 SECONDS IN A CONVECTION, INFRA-RED OR VAPOR PHASE REFLOW OVEN. SOLDER TAIL : R/A CAN RESIST 10 SECONDS IN A WAVE SOLDER APPLICATION WITH A 1.00MM MINIMUM THICK CIRCUIT BOARD.
- IF LEAD FREE P/N. THE PRODUCT MEETS EUROPEAN UNION DIRECTIVES AND OTHER COUNTRY REGULATIONS AS DISCRIBLED IN GS-22-008
- LEAD FREE P/N PACKAGING MEETS GS-14-920 SPECIFICATION

9. BOARD KEEP OUT ZONE- PAGE 9

⑩ SOLDERABLE HOLD DOWN



11. PRODUCT SPEC:110-263

| | | | | |
|---------------|----------------------|---------------------------------------|-----------------|----------------------------------|
| mat'l. code | surface ISO1302 ✓ | tolerance ISO1101 ISO406 | projection ④ | product family MCS |
| l trechn nodr | date | tolerances unless otherwise specified | MM | title 5V EJECT HEADER ASSY |
| N | angle 0°±2' | 0.X±0.3 0.XX±0.13 0.XXX±0.051 | scale 1:1 | |
| | dr | D.SHEAFFER 11/17/94 | | dwg no |
| | enr | D.BRANN 12/7/94 | | sheet 3 of 9 |
| | chr | D.BRANN 12/7/94 | | size A4 |
| | appd | D.BRANN 12/7/94 | | type Product Customer Drawing |
| sheet index | revision sheet | | | |

DESCRIPTION: BELOW P.C.B., DECK AND PUSH-ROD LOCATION ARE AS VIEWED BY USER.

| PRODUCT NO. 95620-XXXXX | PUSH ROD LOCATION | SOLDER TAIL ⑤ | STAND-OFF HEIGHT DIM "L" | EJ. HEADER ASSY 92140-XXX ④ | EJ. MECHANISM ASSY 95079-XXXX ③ | SOLDERABLE HOLD DOWN (4) ② | MOUNTING STYLE TO PCB AND PUSH-ROD LOCATION | USED WITH/COMMENTS | |
|----------------------------|----------------------|---------------------|--------------------------------|--------------------------------------|--|----------------------------------|---|--------------------|-----------------------|
| 500CA | RIGHT | R/A | 0.0 | 500 | 10CA | | | | |
| 500CAH | RIGHT | R/A | 0.0 | 500 | 10CA | 93925-001 | | | |
| 501CA | RIGHT | SMT-STG | 0.0 | 501 | 10CA | | | | |
| 502CA | RIGHT | SMT-IL | 0.0 | 502 | 10CA | | | | |
| 503CA | RIGHT | SMT-IL | 0.0 | 503 | 10CA | | | | |
| 520CA | RIGHT | R/A | 2.0 | 540 | 12CA | | | | |
| 540CA | RIGHT | R/A | 4.0 | 510 | 14CA | | | | |
| 550CA | RIGHT | R/A | 5.0 | 520 | 15CA | | | | |
| 600CA | LEFT | R/A | 0.0 | 500 | 00CA | | | | |
| 601CA | LEFT | SMT-STG | 0.0 | 501 | 00CA | | | | |
| 602CA | LEFT | SMT-IL | 0.0 | 502 | 00CA | | | | |
| 620CA | LEFT | R/A | 2.0 | 540 | 02CA | | | | |
| 640CA | LEFT | R/A | 4.0 | 510 | 04CA | | | | |
| 650CA | LEFT | R/A | 5.0 | 520 | 05CA | | | | |
| 505CA | RIGHT | R/A | 0.0 | 505 | 10CA | | | | 95620-500CA or -600CA |
| 525CA | RIGHT | R/A | 0.0 | 545 | 10CA | | | | 95620-520CA or -620CA |
| 605CA | LEFT | R/A | 0.0 | 505 | 00CA | | | | 95620-500CA or -600CA |
| 625CA | LEFT | R/A | 0.0 | 545 | 00CA | | | | 95620-520CA or -620CA |

NOTES:

1. MATERIAL:
 1.1 HEADER ASSY:
 PLASTIC HOUSING: HIGH TEMPERATURE THERMOPLASTIC UL94V-0 BLACK - ABOVE PCB
 HIGH TEMPERATURE THERMOPLASTIC UL94V-0 (WHITE) - BELOW PCB
 PIN: PHOSPHOR BRONZE

1.2 EJECT MECHANISM ASSY:
 PLASTIC GUIDE: HIGH TEMPERATURE THERMOPLASTIC UL94V-0 BLACK
 PLASTIC PUSH-ROD BUTTON: HIGH TEMPERATURE THERMOPLASTIC UL94V-0 BLACK
 COVER PLATE, EJECT PLATE, LINK ARM,
 PUSH ROD: STAINLESS STEEL
 EMI CONTACT: PHOSPHOR BRONZE

2. FINISH (PIN)
 UNDER PLATING: 0.5um Ni
 CONTACT AREA: 0.076 µm MIN. GOLD

SOLDER TAIL: 2.5um Sn-Pb

③ DIM "X"

| | | |
|---------|--------|------------------|
| 4.25±.1 | 3.5±.1 | 5.0±.1 |
| OTHERS | 36,67 | 1,17,34,35,51,88 |

4. RECOMMENDED HOLD DOWN - 2mm SCREWS (95121-XXX) AND
 HEXNUTS (92869-001), RECOMMENDED SCREW TORQUE: 1.0 TO
 1.5 MAX in-lbs. (1.2-1.7 cm-kgs).

⑤ SOLDER TAIL KEY/PCB LAYOUT:
 R/A = RIGHT ANGLE PIN-THROUGH-HOLE-PAGE 6
 SMT-STG = STAGGERED SURFACE MOUNT-PAGE 7
 SMT-IL = SURFACE MOUNT IN-LINE (SINGLE ROW)-PAGE 8

6. BOARD KEEP OUT ZONE-PAGE 9
 7. PRODUCT SPEC:110-263

| | | | | |
|-------------------|---------------------------------------|-------------------------------------|----------------|-----------------------------------|
| mat'l. code | surface ISO1302 ✓ | tolerance ISO1101 ISO406 | projection | product family MCS |
| ltr ecn nodr date | tolerances unless otherwise specified | | MM | 5V EJECT HEADER ASSY |
| N | angle 0°±2' | 0.X±0.3 0.XX±0.13 0.XXX±0.051 | scale 1:1 | dwg no 95620 sheet 4 of 9 size A4 |
| | dr D.SHEAFFER 11/17/94 | engr D.BRANN 12/7/94 | | type Product Customer Drawing |
| | chr D.BRANN 12/7/94 | appd D.BRANN 12/7/94 | | |
| sheet index | revision sheet | | | |

DESCRIPTION: BELOW P.C.B., DECK AND PUSH-ROD LOCATION ARE AS VIEWED BY USER.

| PRODUCT NO. 95620-XXXXX | PUSH ROD LOCATION | SOLDER TAIL ⑤ | STAND-OFF HEIGHT DIM "L" | EJ. HEADER ASSY 92140-XXX Ⓐ | EJ. MECHANISM ASSY 95079-XXXX Ⓑ | SOLDERABLE HOLD DOWN (4) Ⓒ | MOUNTING STYLE TO PCB AND PUSH-ROD LOCATION | USED WITH/COMMENTS |
|----------------------------|----------------------|---------------------|--------------------------------|--------------------------------------|--|----------------------------------|---|-----------------------|
| 500CALF | RIGHT | R/A | 0.0 | 500LF | 10CA | | | |
| 500CAHLF | RIGHT | R/A | 0.0 | 500LF | 10CA | 93925-001 | | |
| 501CALF | RIGHT | SMT-STG | 0.0 | 501LF | 10CA | | | |
| 502CALF | RIGHT | SMT-IL | 0.0 | 502LF | 10CA | | | |
| 503CALF | RIGHT | SMT-IL | 0.0 | 503LF | 10CA | | | NO BOARD LOCATORS |
| 520CALF | RIGHT | R/A | 2.0 | 540LF | 12CA | | | |
| 540CALF | RIGHT | R/A | 4.0 | 510LF | 14CA | | | |
| 550CALF | RIGHT | R/A | 5.0 | 520LF | 15CA | | | |
| 600CALF | LEFT | R/A | 0.0 | 500LF | 00CA | | | |
| 601CALF | LEFT | SMT-STG | 0.0 | 501LF | 00CA | | | |
| 602CALF | LEFT | SMT-IL | 0.0 | 502LF | 00CA | | | |
| 620CALF | LEFT | R/A | 2.0 | 540LF | 02CA | | | |
| 640CALF | LEFT | R/A | 4.0 | 510LF | 04CA | | | |
| 650CALF | LEFT | R/A | 5.0 | 520LF | 05CA | | | |
| 505CALF | RIGHT | R/A | 0.0 | 505LF | 10CA | | | 95620-500CA or -600CA |
| 525CALF | RIGHT | R/A | 0.0 | 545LF | 10CA | | | 95620-520CA or -620CA |
| 605CALF | LEFT | R/A | 0.0 | 505LF | 00CA | | | 95620-500CA or -600CA |
| 625CALF | LEFT | R/A | 0.0 | 545LF | 00CA | | | 95620-520CA or -620CA |

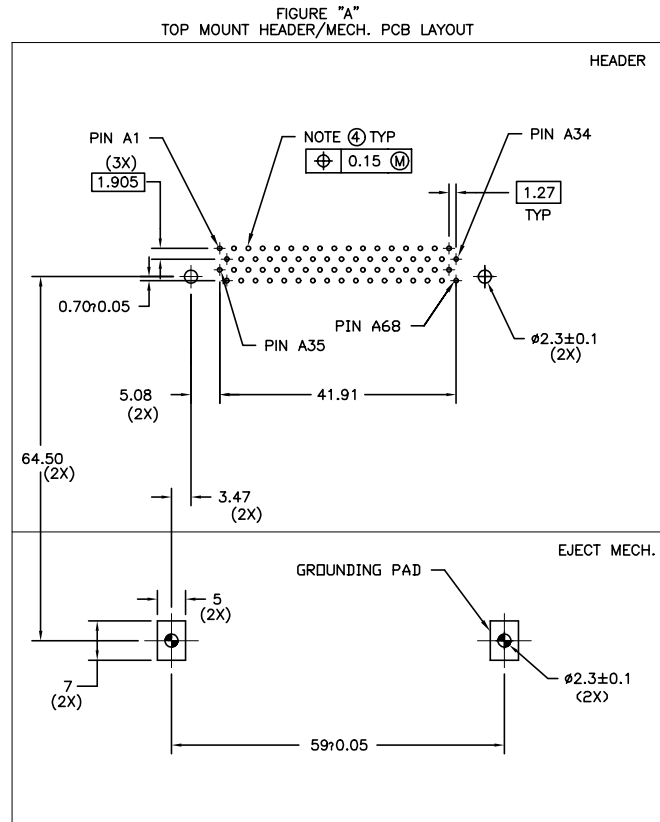
NOTES:

- MATERIAL:
 - 1.1 HEADER ASSY:
PLASTIC HOUSING: HIGH TEMPERATURE THERMOPLASTIC UL94V-0 BLACK - ABOVE PCB
HIGH TEMPERATURE THERMOPLASTIC UL94V-0 (WHITE) - BELOW PCB
PIN: PHOSPHOR BRONZE
 - 1.2 EJECT MECHANISM ASSY:
PLASTIC GUIDE: HIGH TEMPERATURE THERMOPLASTIC UL94V-0 BLACK
PLASTIC PUSH-ROD BUTTON: HIGH TEMPERATURE THERMOPLASTIC UL94V-0 BLACK
COVER PLATE, EJECT PLATE, LINK ARM,
PUSH ROD: STAINLESS STEEL
EMI CONTACT: PHOSPHOR BRONZE
- FINISH (PIN)
UNDER PLATING: 0.5um Ni
CONTACT AREA: 0.076 μm MIN. GOLD
SOLDER TAIL: 2.5um Sn-Pb
- DIM "X"

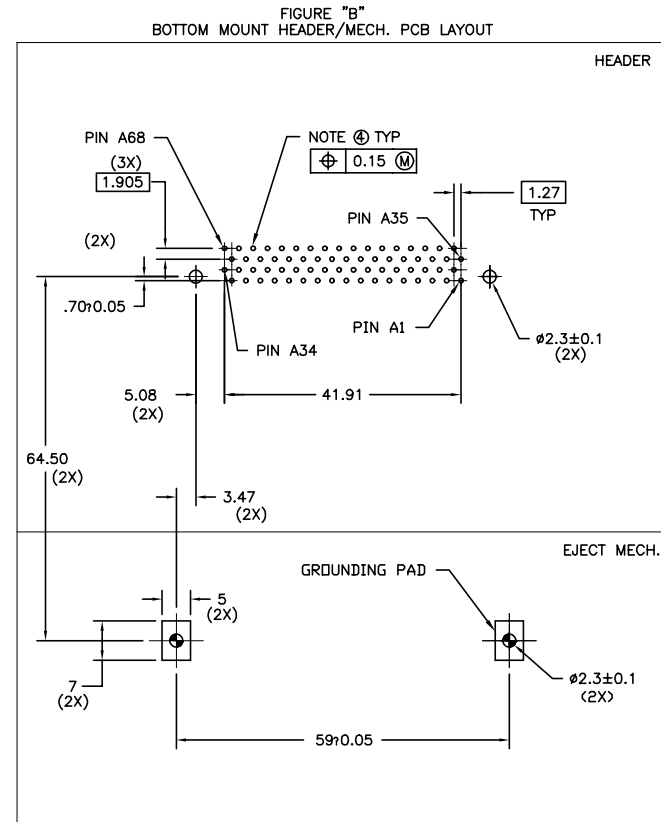
| | | |
|---------|--------|------------------|
| 4.25±.1 | 3.5±.1 | 5.0±.1 |
| OTHERS | 36,67 | 1,17,34,35,51,68 |
- RECOMMENDED HOLD DOWN - 2mm SCREWS (95121-XXX) AND HEXNUTS (92869-001). RECOMMENDED SCREW TORQUE: 1.0 TO 1.5 MAX in-lbs. (1.2-1.7 cm-kgs).
- SOLDER TAIL KEY/PCB LAYOUT:
R/A = RIGHT ANGLE PIN-THROUGH-HOLE-PAGE 6
SMT-STG = STAGGERED SURFACE MOUNT-PAGE 7
SMT-IL = SURFACE MOUNT IN-LINE (SINGLE ROW)-PAGE 8
- BOARD KEEP OUT ZONE-PAGE 9
- IF LEAD FREE P/N. THE HOUSING WILL WITHSTAND EXPOSURE TO 260°C PEAK TEMPERATURE
SOLDER TAIL : SMT-IL, SMT-STG CAN RESIST 40 SECONDS IN A CONVECTION, INFRA-RED OR VAPOR PHASE REFLOW OVEN.
SOLDER TAIL : R/A CAN RESIST 10 SECONDS IN A WAVE SOLDER APPLICATION WITH A 1.00MM MINIMUM THICK CIRCUIT BOARD.
- IF LEAD FREE P/N.THE PRODUCT MEETS EUROPEAN UNION DIRECTIVES AND OTHER COUNTRY REGULATIONS AS DISCRIBED IN GS-22-008
- LEAD FREE P/N PACKAGING MEETS GS-14-920 SPECIFICATION
- PRODUCT SPEC:110-263

| | | | | |
|--------------------|---------------------------------------|-------------------------------------|-----------------|-------------------------------|
| mat'l. code | surface ISO1302 ✓ | tolerance ISO1101 ISO406 | projection | product family MCS |
| l trechn nodr date | tolerances unless otherwise specified | | | title 5V EJECT HEADER ASSY |
| N | angle 0°±2' | 0.X±0.3 0.XX±0.13 0.XXX±0.051 | MM scale 1:1 | dwg no 95620 |
| | dr | D.SHEAFFER 11/17/94 | | sheet 5 of 9 size A4 |
| | enr | D.BRANN 12/7/94 | | type Product Customer Drawing |
| | chr | D.BRANN 12/7/94 | | |
| | appd | D.BRANN 12/7/94 | | |
| sheet index | revision sheet | | | |

Single Mount Right Angle



BOARD VIEW FROM CONNECTOR MOUNTED SIDE
TOP OF BOARD IN APPLICATION



BOARD VIEW FROM CONNECTOR MOUNTED SIDE
BOTTOM OF BOARD IN APPLICATION

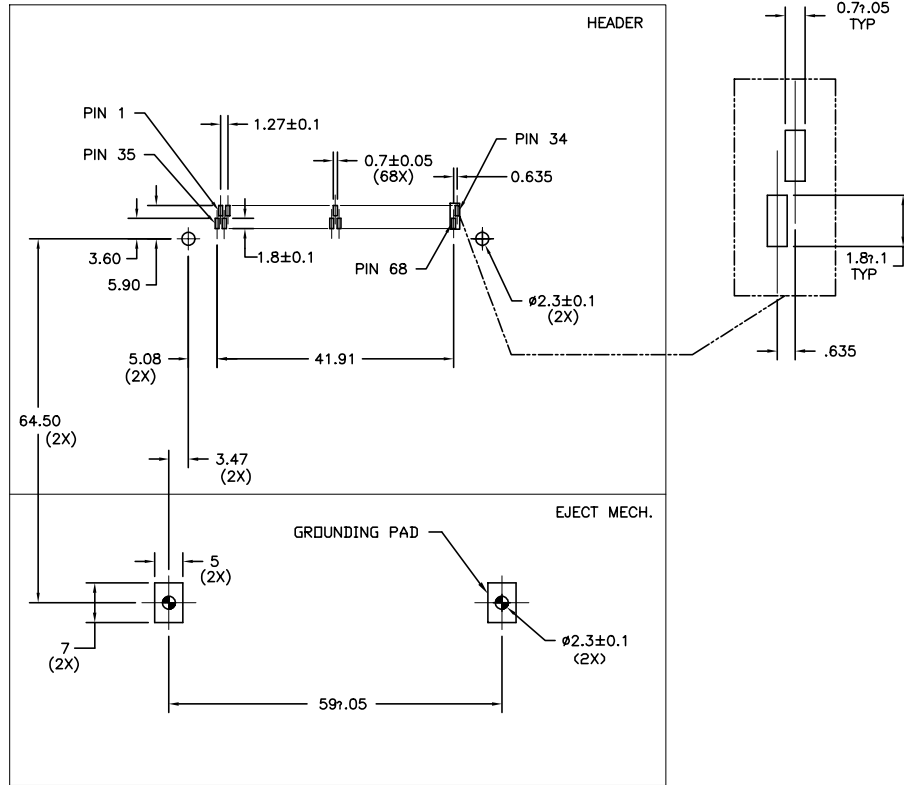
NOTES:

- 1 ALL TOLERANCES ±0.15 UNLESS NOTED.
- 2 KEEP-OUT ZONE FOR HEADERS W\STAND-OFF OPTIONS SEE SHEET 9 FIGURE A.
- 3 KEEP-OUT ZONE FOR HEADERS W\O STAND-OFF OPTIONS SEE SHEET 9 FIGURE B.
- ④ RECOMMENDED DIAMETER IS Ø1.0.
FOR PROCESSES USING PASTE REFLOW, HOLE MAY BE AS SMALL AS Ø0.79

| | | | | |
|---------------|----------------------|---------------------------------------|------------------|----------------------------------|
| mat'l. code | surface ISO1302 ✓ | tolerance ISO1101 ISO406 | projection MM | product family MCS |
| l trechn nodr | date | tolerances unless otherwise specified | MM | title 5V EJECT HEADER ASSY |
| N | | angle 0°±2' | scale 1:1 | dwg no 95620 |
| | dr D.SHEAFFER | 11/17/94 | | sheet 6 of 9 |
| | enr D.BRANN | 12/7/94 | | size A4 |
| | chr D.BRANN | 12/7/94 | | |
| | appd D.BRANN | 12/7/94 | | type Product Customer Drawing |
| sheet index | revision sheet | | | |

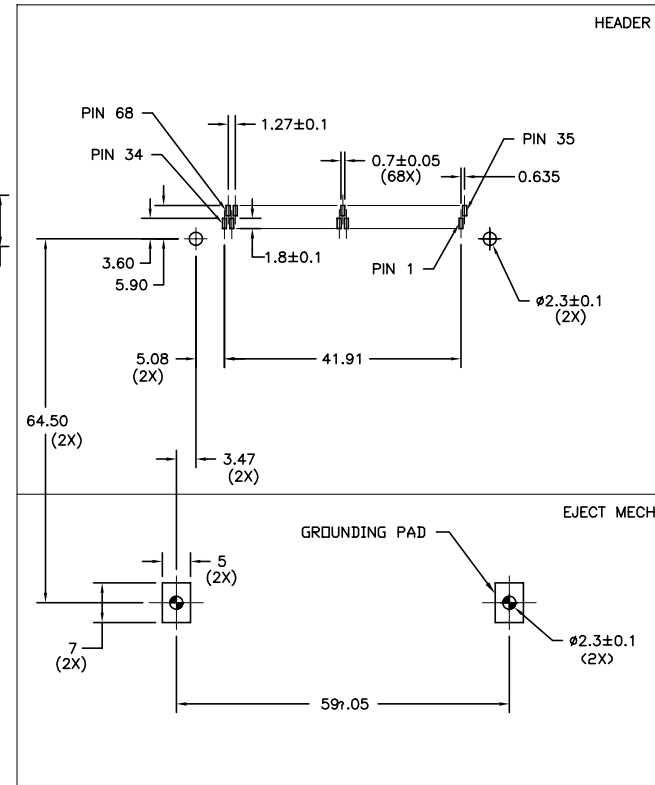
Surface Mount 2-Row

FIGURE "A"
TOP MOUNT HEADER/MECH. PCB LAYOUT



BOARD VIEW FROM CONNECTOR MOUNTED SIDE
TOP OF BOARD IN APPLICATION

FIGURE "B"
BOTTOM MOUNT HEADER/MECH. PCB LAYOUT



BOARD VIEW FROM CONNECTOR MOUNTED SIDE
BOTTOM OF BOARD IN APPLICATION

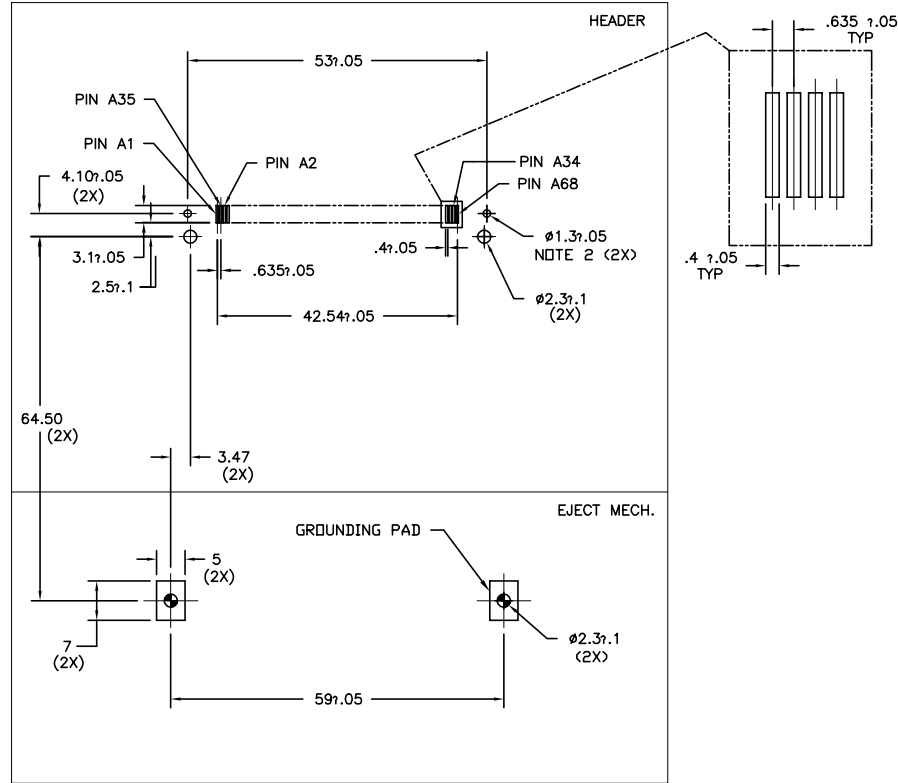
NOTES:

- ALL TOLERANCES ±0.15 UNLESS NOTED.
- KEEP-OUT ZONE FOR ASSEMBLIES SHOWN ON SHEET 9 FIGURE B.

| | | | | |
|---------------|----------------------|---------------------------------------|-----------------|----------------------------------|
| mat'l. code | surface ISO1302 ✓ | tolerance ISO1101 ISO406 | projection ⊕ | product family MCS |
| l trechn nodr | date | tolerances unless otherwise specified | MM | 5V EJECT HEADER ASSY |
| N | | angle 0°±2' | scale 1:1 | |
| | dr | D.SHEAFFER 11/17/94 | FCI | dwg no |
| | enr | D.BRANN 12/7/94 | | sheet 7 of 9 |
| | chr | D.BRANN 12/7/94 | | size A4 |
| | appd | D.BRANN 12/7/94 | | type Product Customer Drawing |
| sheet index | revision sheet | | | |

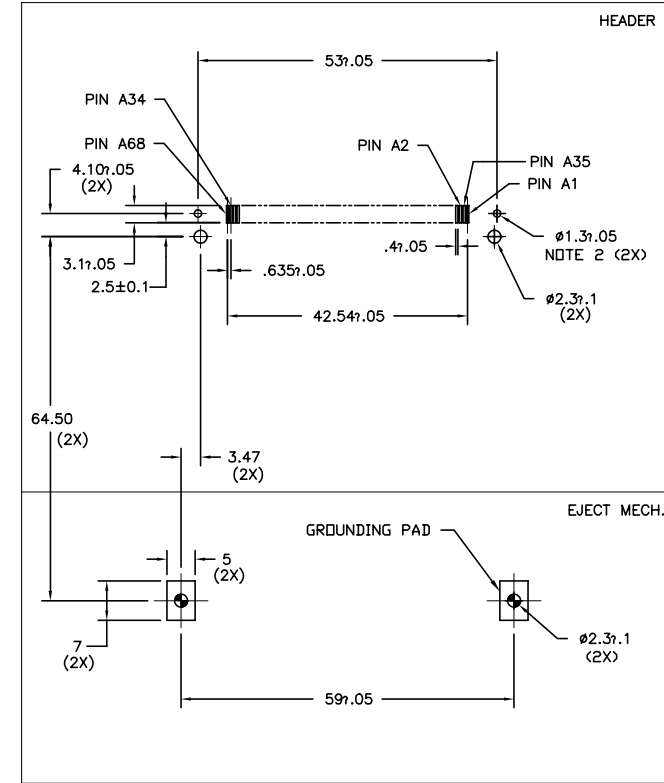
Surface Mount In-Line

FIGURE "A"
TOP MOUNT HEADER/MECH. PCB LAYOUT



BOARD VIEW FROM CONNECTOR MOUNTED SIDE
TOP OF BOARD IN APPLICATION

FIGURE "B"
BOTTOM MOUNT HEADER/MECH. PCB LAYOUT



BOARD VIEW FROM CONNECTOR MOUNTED SIDE
BOTTOM OF BOARD IN APPLICATION

NOTES:

- 1 ALL TOLERANCES ±.15 UNLESS NOTED.
- 2 THIS HOLE REQUIRED FOR HEADERS WITH BOARD LOCATOR.
- 3 KEEP-OUT ZONE FOR ASSEMBLIES SHOWN ON SHEET 9 FIGURE B.

| | | | | |
|--------------------|---------------------------------------|----------------|------------|-------------------------------|
| mat'l. code | surface | tolerance | projection | product family |
| | ISO1302 ✓ | ISO1101 ISO406 | ISO 1101 | MCS |
| l trechn nodr date | tolerances unless otherwise specified | | MM | 5V EJECT HEADER ASSY |
| N | angle | 0.X±0.3 | scale 1:1 | |
| | 0°±2' | 0.XX±0.13 | | |
| | | 0.XXX±0.051 | | |
| dr | D.SHEAFFER | 11/17/94 | | dwg no |
| enr | D.BRANN | 12/7/94 | | sheet 8 of 9 |
| chr | D.BRANN | 12/7/94 | | size |
| appd | D.BRANN | 12/7/94 | | A4 |
| sheet index | revision sheet | | | type Product Customer Drawing |

Board Keep Out Zone
(NOT INCLUDING HEADER)

FIGURE "A"
KEEP OUT ZONE FOR STANDOFF VERSION

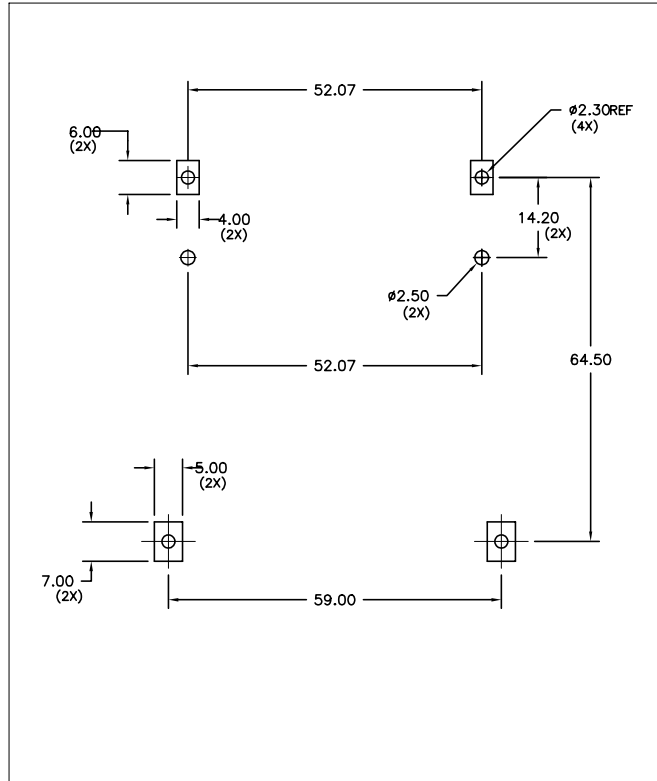
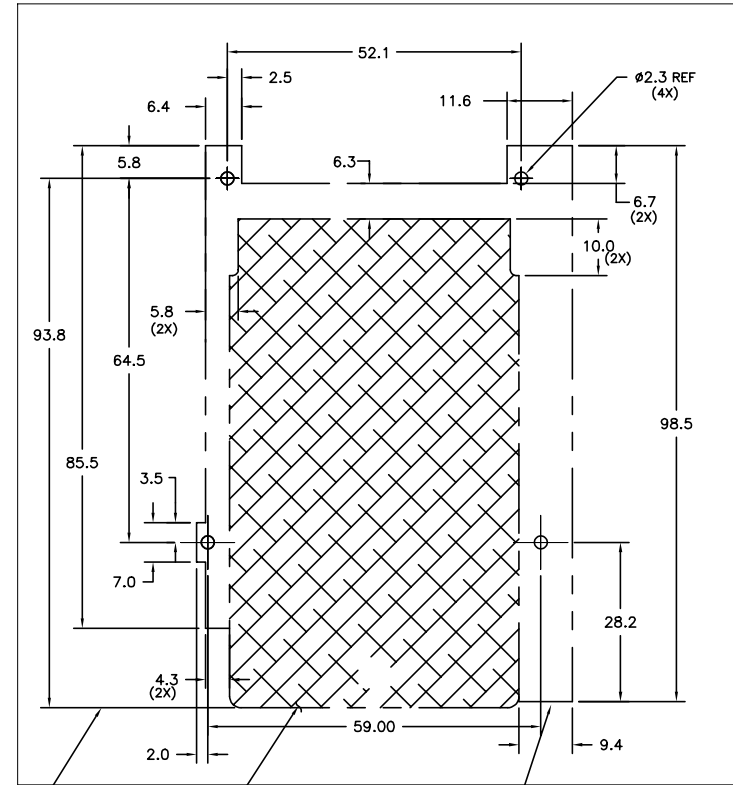


FIGURE "B" NOTE 1
KEEP OUT ZONE FOR NO STANDOFF VERSION
RIGHT HAND PUSHROD VERSION SHOWN
MIRROR IMAGE FOR LEFT HAND PUSHROD



NO WIRING BOARD TRACES ALLOWED IN CARD INSERTION AREA OF P.C. BOARD

SURFACE REPRESENTS BACK END OF CARD

SURFACE REPRESENTS FRONT FACE OF PUSH ROD

NOTES:

- ① ALL DIMENSIONS SHOWN ARE NOMINAL AND DEFINE THE OUTSIDE SURFACES OF THE ASSEMBLY. A MINIMUM OF 0.25mm (0.010") CLEARANCE BETWEEN THE ASSEMBLY AND ANY COMPONENTS IS SUGGESTED.

| | | | | |
|--------------|----------------------|---------------------------------------|-----------------|-------------------------------|
| mat'l. code | surface ISO1302 ✓ | tolerance ISO1101 ISO406 | projection ⊕ | product family MCS |
| ltr ecn nodr | date | tolerances unless otherwise specified | MM | 5V EJECT HEADER ASSY |
| N | | angle 0°±2' | scale 1:1 | |
| | | 0.X±0.3 | | |
| | | 0.XX±0.13 | | |
| | | 0.XXX±0.051 | | |
| dir | D.SHEAFFER | 11/17/94 | FCI | dwg no |
| enr | D.BRANN | 12/7/94 | | sheet 9 of 9 |
| chr | D.BRANN | 12/7/94 | | size |
| appd | D.BRANN | 12/7/94 | | A4 |
| sheet index | revision sheet | | | type Product Customer Drawing |