

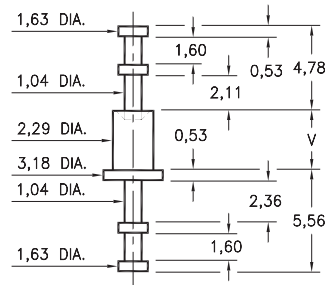
MALE PCB PINS

SOLDER TERMINAL TURRETS

2512

2512-X-00-XX-00-00-07-0

Swage mount in 2,39 hole

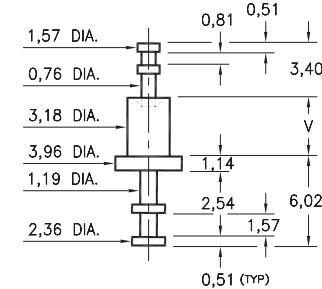


Basic Part Number	Board Thickness	Length V
2512-1	0,79	1,57
2512-2	1,57	2,39
2512-3	2,39	3,18
2512-4	3,18	3,96

2705

2705-X-00-XX-00-00-07-0

Swage mount in 3,28 hole

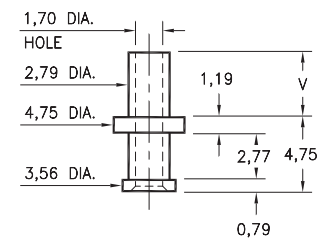


Basic Part Number	Board Thickness	Length V
2705-1	0,79	1,91
2705-2	1,57	2,67
2705-3	2,39	3,43
2705-4	3,18	4,19

2803

2803-X-00-XX-00-00-07-0

Swage mount in 2,87 hole

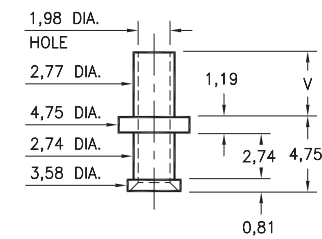


Basic Part Number	Board Thickness	Length V
2803-1	0,79	1,98
2803-2	1,57	2,77
2803-3	2,39	3,56
2803-4	3,18	4,34

2815

2815-X-00-XX-00-00-07-0

Swage mount in 2,87 hole

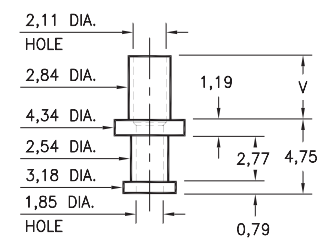


Basic Part Number	Board Thickness	Length V
2815-1	0,79	1,91
2815-2	1,57	2,67
2815-3	2,39	3,43
2815-4	3,18	4,19

2816

2816-X-00-XX-00-00-07-0

Swage mount in 2,95 hole

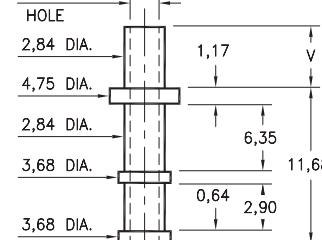


Basic Part Number	Board Thickness	Length V
2816-1	0,79	1,98
2816-2	1,57	2,77
2816-3	2,39	3,58
2816-4	3,18	4,37

2817

2817-X-00-XX-00-00-07-0

Swage mount in 2,95 hole



Basic Part Number	Board Thickness	Length V
2817-1	0,79	1,91
2817-2	1,57	2,67
2817-3	2,39	3,43
2817-4	3,18	4,19

SPECIFICATIONS:

Pin Material: Brass Alloy 360, 1/2 Hard
(Swage pins are annealed)

Dimensions: Millimeters

Tolerances On: Lengths: $\pm 0,13$
Diameters: $\pm 0,051$
Angles: $\pm 2^\circ$



ORDER CODE: **XXXX - X - 00 - XX - 00 - 00 - 07 - 0**

BASIC PART #

SPECIFY PIN FINISH:

- 01** 5,08 μ m TIN/LEAD OVER NICKEL
- 80** 5,08 μ m TIN OVER NICKEL (RoHS)
- 44** 7,62 μ m SILVER OVER COPPER (RoHS)
- 50** 7,62 μ m ELECTRO-SOLDER
(60/40 SnPb)

