

MOTOR CIRCUIT
 120V, 50/60 HZ
 * ROTATION AS VIEWED FROM TOP END
 MOTOR SPEEDS: SEE CHART

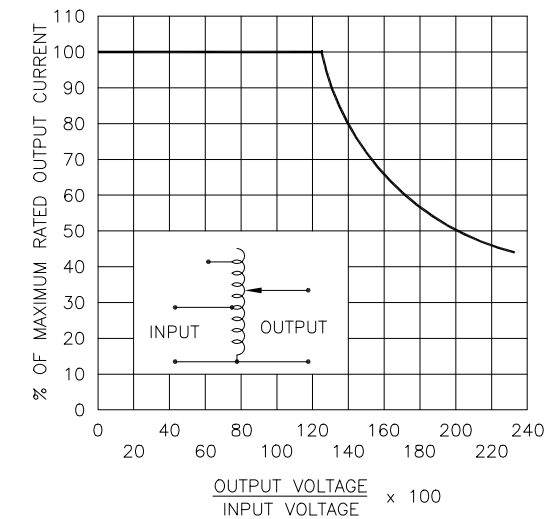


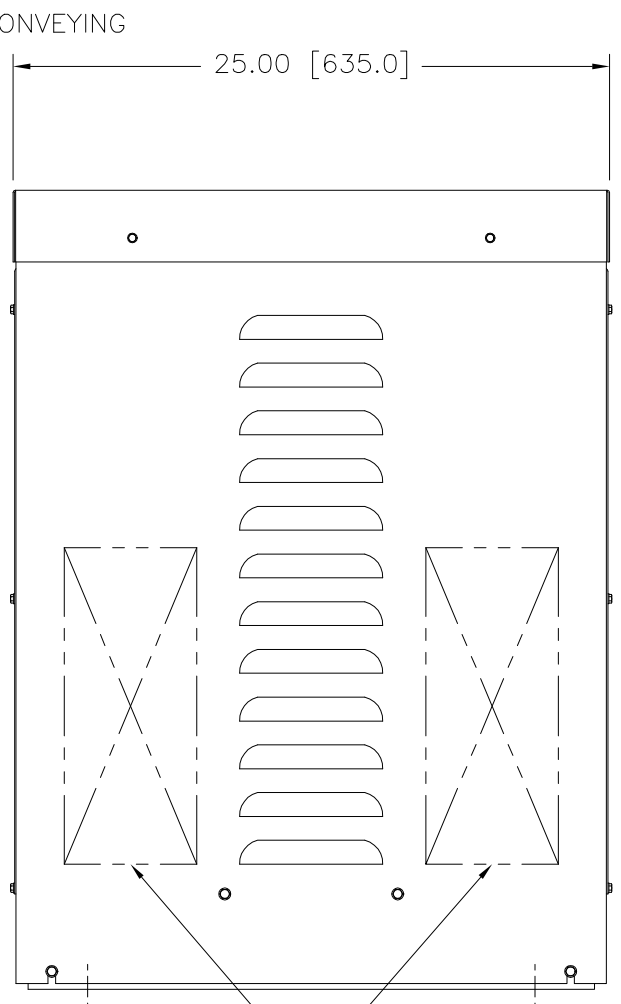
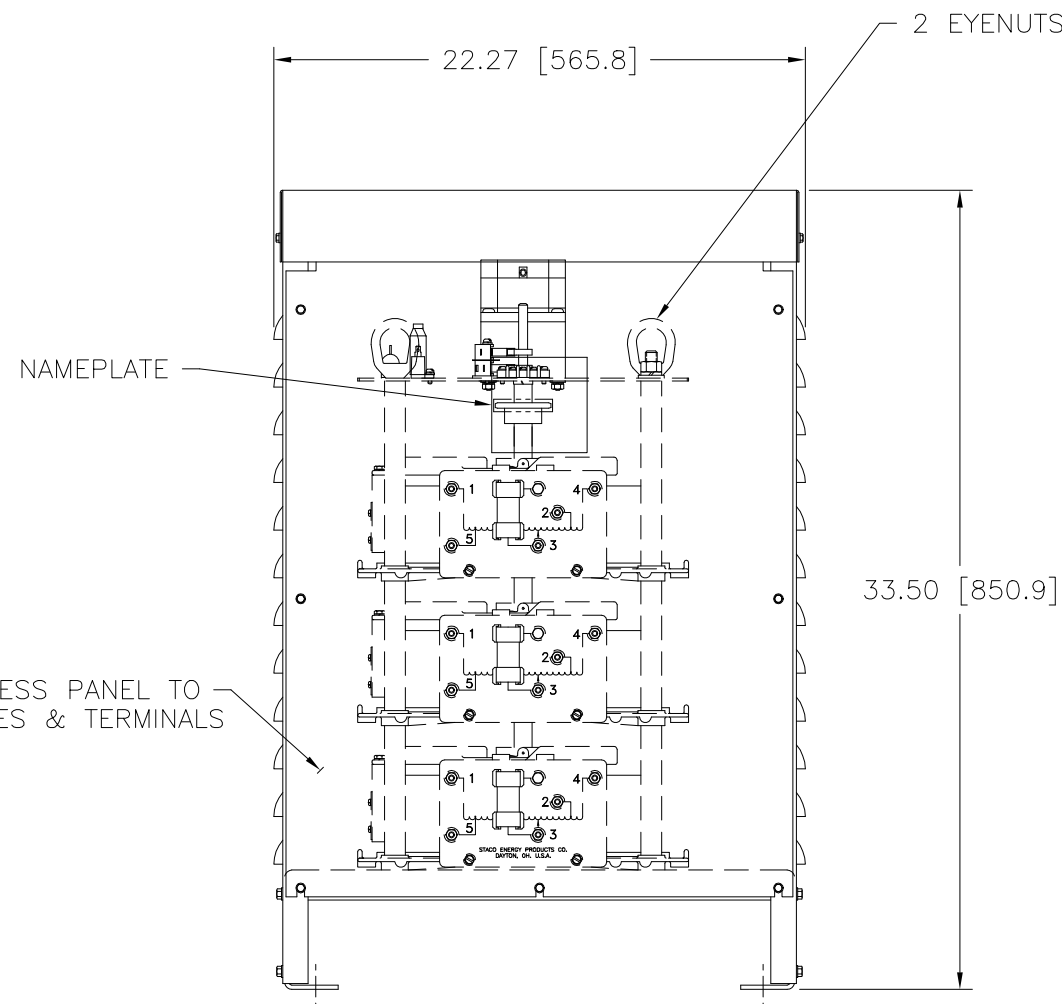
FIGURE A
 MAXIMUM OUTPUT CURRENT OF ANY DUAL INPUT VOLTAGE OR VOLTAGE DOUBLER UNIT OPERATED AT LOWER INPUT VOLTAGE.

MAXIMUM OUTPUT CURRENT IN OUTPUT VOLTAGE RANGE FROM 0 TO 25% ABOVE LINE VOLTAGE. AT HIGHER OUTPUT VOLTAGES, OUTPUT CURRENT MUST BE REDUCED ACCORDING TO RATING CURVE, FIGURE A.

++ MAXIMUM KVA AT MAXIMUM OUTPUT AND CORRESPONDING DE-RATED CURRENT. MAXIMUM KVA AT LOWER OUTPUT VOLTAGES MAY BE CALCULATED FROM RATING CURVE, FIGURE A.

V.D. = VOLTAGE DOUBLER.

SPEED (SECONDS)	MODEL NUMBER
5	5M5021E-3Y
15	15M5021E-3Y
30	30M5021E-3Y
60	60M5021E-3Y



RECOMMENDED AREAS FOR CONDUIT ENTRY

SPECIFICATIONS								
WIRING	INPUT		OUTPUT			SHAFT ROTATION FOR VOLTAGE INCREASE	TERMINAL CONNECTIONS FOR INCREASING VOLTAGE AS VIEWED FROM TOP	
	VOLTS	HERTZ	VOLTS	CONSTANT CURRENT LOAD			INPUT	OUTPUT
THREE PHASE WYE	480	50/60	0-480	MAX. AMPS 28	MAX. KVA 23.3	CW	4-4-4	3-3-3
		60	0-560	28	27.2	CW	2-2-2	3-3-3
	240	60	0-560	28-12 V.D.	11.8 ++	CW	5-5-5	3-3-3

UNLESS OTHERWISE SPECIFIED, TOLERANCE IS ± DECIMALS .XX .XXX .12 .0002 .03 1° DRAFT 1-1/2° UNITS IN (mm)
 MATERIAL: ALL DIMENSIONS APPLY AFTER PLATING
 TITLE: SPECIFICATION CONTROL DRAWING
 MOTORIZED VARIABLE TRANSFORMER
 TYPE: M5021E-3Y
 DRAWN BY: S.A. SMITH DATE: 11/14/94 FIRST USED ON: M5021E-3Y DO NOT SCALE DWG.
 CHECKER: DATE: WEIGHT APPROX.: CAGE CODE: 83008
 ENGINEER: DATE: SCALE: .25=1 SHEET 1 OF 1
 DWG. NO. 031-8290
STACO ENERGY PRODUCTS CO.
 A Components Corporation of American Company
 302 Gadsden Boulevard Dayton, Ohio 45403 USA