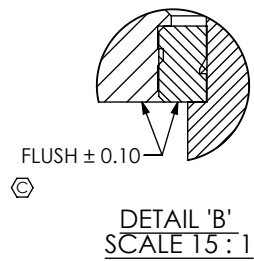
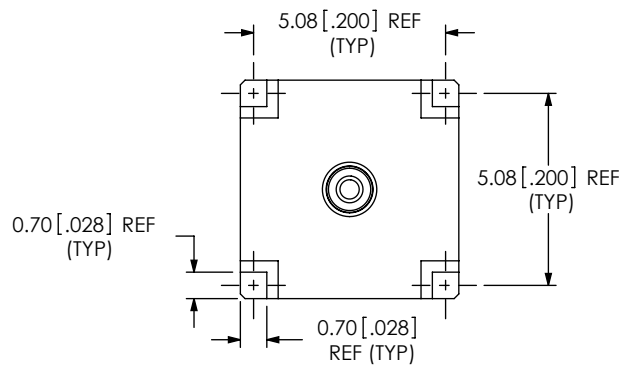
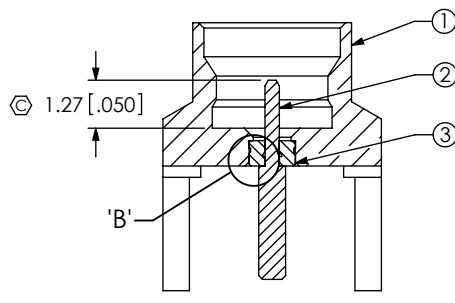
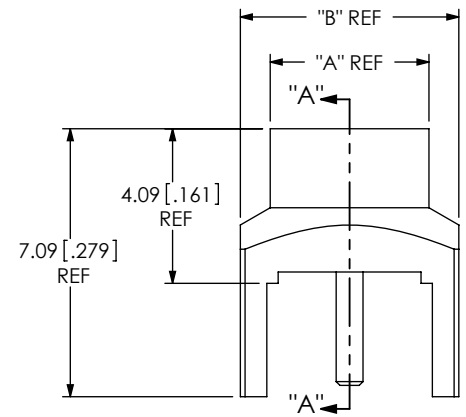


DESIGNED & DIMENSIONED  
IN MILLIMETERS [INCHES]

DO NOT  
SCALE FROM  
THIS PRINT

| ITEM | COMPONENT | -HG                                 | -GF                                 |
|------|-----------|-------------------------------------|-------------------------------------|
| 1    | SHELL     | SMP-PX-P-G-ST-TH2-SHL (SEE TABLE 2) | SMP-PX-P-F-ST-TH2-SHL (SEE TABLE 2) |
| 2    | PIN       | SMP-P-P-H-ST-TH2-PIN                | SMP-P-P-G-ST-TH2-PIN                |
| 3    | INSULATOR | SMP-P-P-ST-TH2-INS                  |                                     |



SMP-PX-P-XX-ST-TH2

GENDER  
-P: PLUG

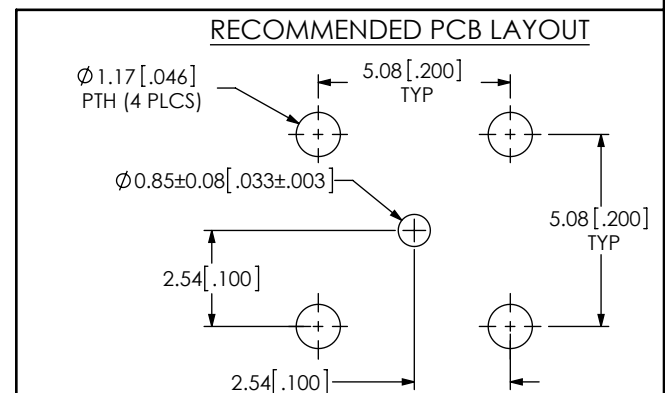
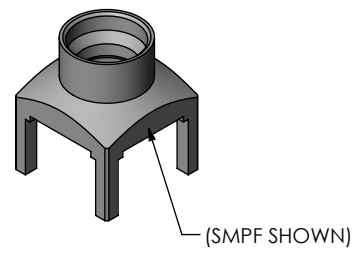
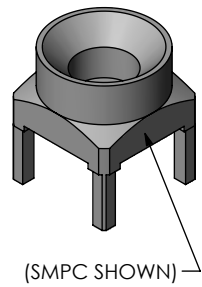
TERMINATION  
-TH2: THROUGH HOLE  
(.200" PITCH)

ORIENTATION  
-ST: STRAIGHT

PLATING SPECIFICATION  
-HG: 30µ" GOLD CENTER CONTACT,  
10µ" GOLD OUTER CONTACT  
-GF: 10µ" GOLD CENTER CONTACT,  
3µ" GOLD OUTER CONTACT  
(SEE TABLE 1)

TYPE  
-P: PCB

INTERFACE  
-F: FULL DETENT  
-L: LIMITED DETENT  
-S: SMOOTH BORE  
-C: CATCHER'S MITT



| INTERFACE | SMP-PX-P-X-ST-TH1-SHL | "A"          | "B"          |
|-----------|-----------------------|--------------|--------------|
| -F        | SMP-PF-P-X-ST-TH2-SHL | Ø4.20 [.165] | □5.78 [.228] |
| -L        | SMP-PL-P-X-ST-TH2-SHL | Ø4.20 [.165] | □5.78 [.228] |
| -S        | SMP-PS-P-X-ST-TH2-SHL | Ø4.20 [.165] | □5.78 [.228] |
| -C        | SMP-PC-P-X-ST-TH2-SHL | Ø5.99 [.236] | □5.99 [.236] |

- NOTES:
- ⊕ REPRESENTS A CRITICAL DIMENSION.
  - MINIMUM PUSHOUT FORCE FOR CENTER CONTACT: 4.45N [1.0 LB].  
INSULATOR: 6.67N [1.5 LB].
  - PRODUCT TO BE PACKAGED PER PACKING STANDARD CO-RF-WI-3040-M.  
TRAY: TY-SMA001-1  
COVER: TY-SMA001-2  
200 PARTS PER TRAY (2 PARTS PER POCKET)

UNLESS OTHERWISE SPECIFIED,  
DIMENSIONS ARE IN MILLIMETERS.  
TOLERANCES ARE:  
DECIMALS ANGLES  
X.X: ±0.3 [.01] 5°  
X.XX: ±0.13 [.005]  
X.XXX: ±0.051 [.0020]

PROPRIETARY NOTE  
THIS DOCUMENT CONTAINS INFORMATION  
CONFIDENTIAL AND PROPRIETARY TO  
SAMTEC, INC. AND SHALL NOT BE REPRODUCED  
OR TRANSFERRED TO OTHER DOCUMENTS OR  
DISCLOSED TO OTHERS OR USED FOR ANY  
PURPOSE OTHER THAN THAT WHICH IT WAS  
OBTAINED WITHOUT THE EXPRESSED WRITTEN  
CONSENT OF SAMTEC, INC.

520 PARK EAST BLVD, NEW ALBANY, IN 47150  
PHONE: 812-944-6733 FAX: 812-948-5047  
e-Mail: info@SAMTEC.com code 55322

MATERIAL: DO NOT SCALE DRAWING SHEET SCALE: 5:1  
CONTACT, SHELL: BRASS  
DIELECTRIC: PTFE  
F:\DWG\MISC\MKTG\SMP-PX-P-XX-ST-TH2-MKT.SLDDRW

DESCRIPTION:  
SMP THROUGH HOLE PLUG - 50 OHM  
DWG. NO.  
SMP-PX-P-XX-ST-TH2  
BY: T MEEK 10/29/2010 SHEET 1 OF 1