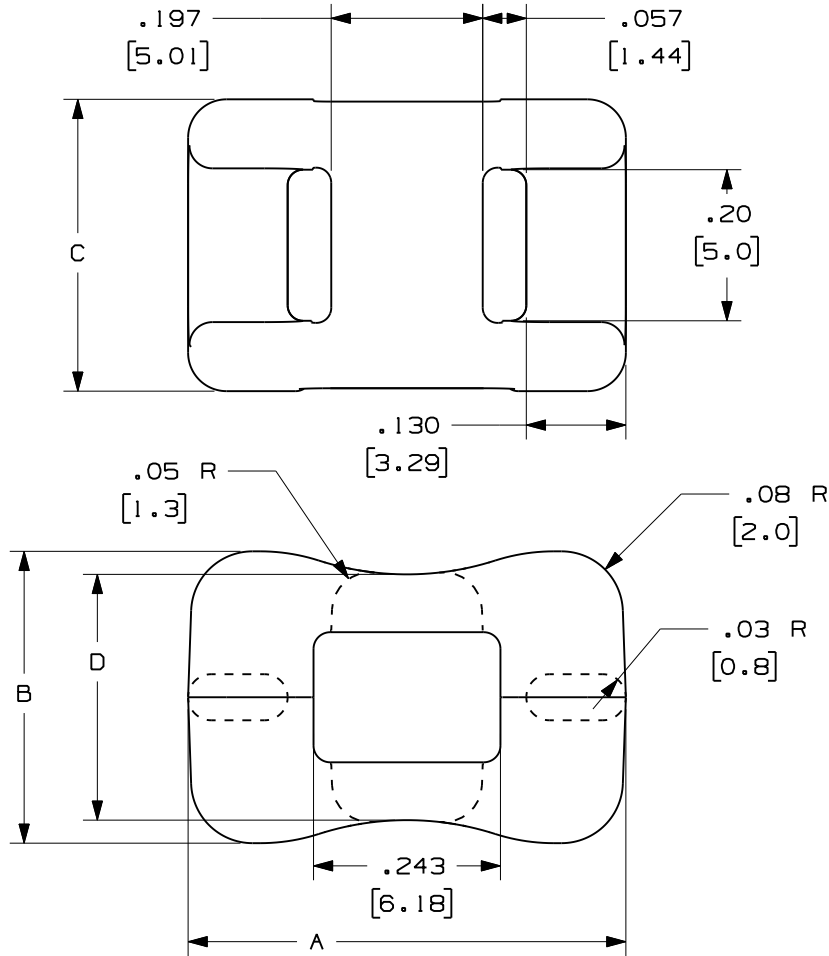
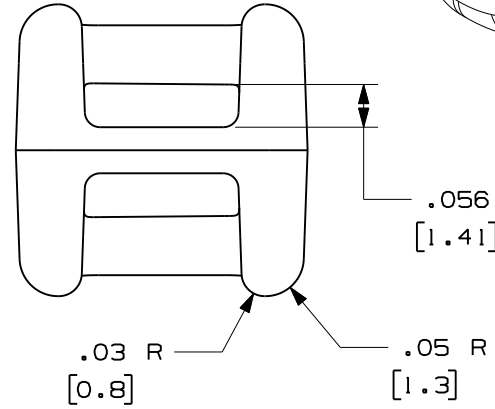
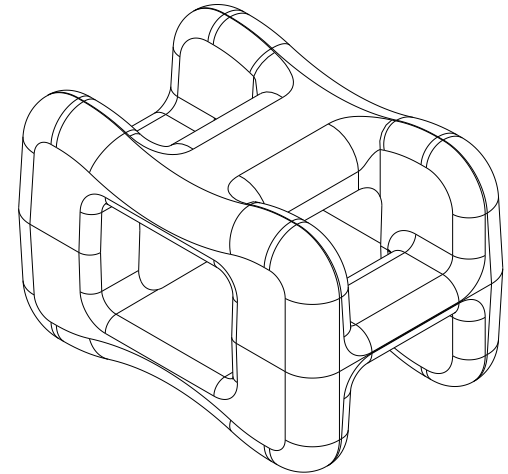


THIS COPY IS PROVIDED ON A RESTRICTED BASIS AND IS NOT TO BE USED IN ANY WAY DETRIMENTAL TO THE INTERESTS OF PANDUIT CORP.



PANDUIT PART NO.	A in (mm)	B in (mm)	C in (mm)	D in (mm)	TENSILE STRENGTH lbs. (N)	WEIGHT lbs. (g)/100pcs.
CSMS-D71	.570 (14.48)	.38 (9.7)	.38 (9.7)	.320 (8.13)	50 (222)	.155 (10.69)



NOTES:

- 1) DIMENSIONS IN ( ) ARE IN METRIC UNITS
- 2) SEE WWW.PANDUIT.COM FOR PART NUMBER SUFFIX DESIGNATION FOR PACKAGE SIZE AND PART COLOR.
- 3) ALL DIMENSIONS NOT INCLUDED IN TABLE ARE REFERENCE ONLY

CAD FILENAME

10B012DP\_DC/00B

PANDUIT CORP TINLEY PARK, ILLINOIS

LIGHTWEIGHT CABLE SPACER

DIMENSIONAL TOLERANCES ARE:  
 (.X) ±0.05 (1.3)      (.XXX) ±.010 (0.25)  
 (.XX) ±0.02 (0.5)      ANGLES ±5 DEG

UNLESS OTHERWISE SPECIFIED, ALL DIMENSIONS ARE GIVEN IN INCHES, THIRD ANGLE PROJECTION

REV	DATE	BY	CHK	DESCRIPTION	ECN	CHK	CUST	SUP
01	10/21/11	SHOR	PBC	REVISED DIMENSIONAL DETAIL	10B012DP_DC		MJVE	
R	4/4/2011	JADE	MJVE	INITIAL RELEASE			MJVE	

DRAWN BY	JADE	MAT'L/COLOR:	PEEK	SCALE	4/1		
DATE	4-APR-11			DRAWING NO.	10B012DP_DC	DWG SIZE	A
CK'D	MJVE						