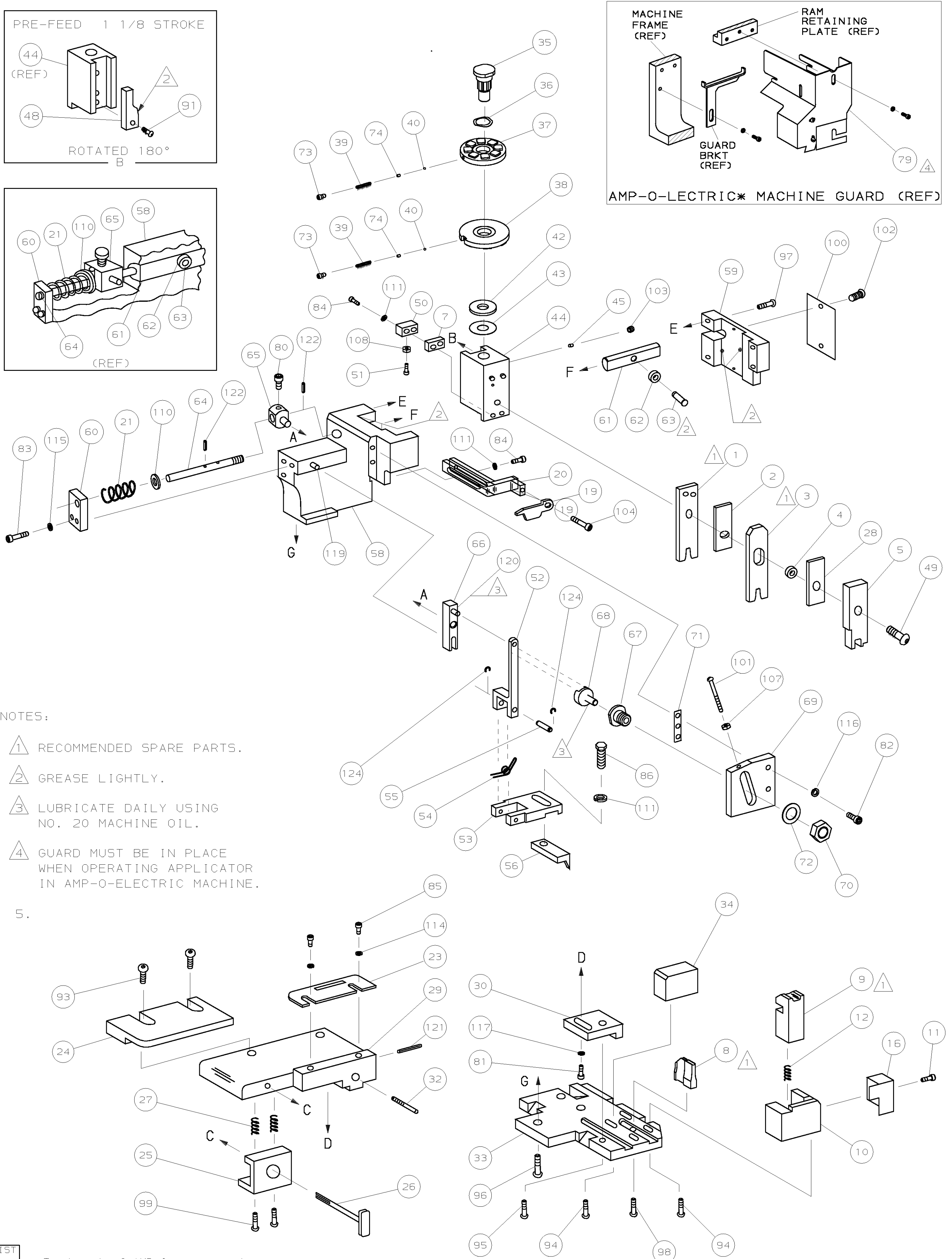


THIS DRAWING IS A CONTROLLED DOCUMENT.



- NOTES:
- 1 RECOMMENDED SPARE PARTS.
 - 2 GREASE LIGHTLY.
 - 3 LUBRICATE DAILY USING NO. 20 MACHINE OIL.
 - 4 GUARD MUST BE IN PLACE WHEN OPERATING APPLICATOR IN AMP-O-ELECTRIC MACHINE.

5.

THIS DRAWING IS UNCLASSIFIED AND INFORMATION IS CONTAINED HEREIN IS UNCLASSIFIED EXCEPT WHERE SHOWN OTHERWISE. IT IS THE PROPERTY OF AMP INCORPORATED AND IS LOANED TO YOU BY THE DRAWING OFFICE. IT IS TO BE USED ONLY FOR THE PROJECT AND FOR WHICH IT WAS PREPARED. IT IS NOT TO BE REPRODUCED, COPIED, OR TRANSMITTED IN ANY FORM OR BY ANY MEANS, ELECTRONIC OR MECHANICAL, INCLUDING PHOTOCOPYING, RECORDING, OR BY ANY INFORMATION STORAGE AND RETRIEVAL SYSTEM. WITHOUT THE WRITTEN AUTHORIZATION OF AMP INCORPORATED, HARRISBURG, PA. ALL RIGHTS RESERVED. COPYRIGHT 19

66 * Trademark of AMP Incorporated

REF	PART NO	DESCRIPTION	ITEM NO	REF	PART NO	DESCRIPTION	ITEM NO
REF	21045-3	RING, RET "C" (.187ø) FEED FINGER PIN	124	REF	454220-1	CAP, HOUSING	59
REF	5-21028-1	PIN, SLT SPR (.125øx.50) ADJ ROD	123	REF	454485-1	HOUSING	58
1	4-21028-0	PIN, SLT SPR (.093øx.75) ST GUIDE PL	121	REF	690542-2	PAWL, FEED	56
REF	1-21030-1	PIN, DOWEL (.187øx.50) LEVER	120	REF	240624-1	PIN, FEED FINGER	55
REF	1-21030-6	PIN, DOWEL (.187øx1.25) HOUSING	119	REF	691499-1	SPRING, FEED FINGER	54
1	21024-5	WASHER, LOCK (NO.10) ADJ BLOCK	118	REF	690541-1	FINGER, FEED	53
REF	21024-5	WASHER, LOCK (NO.10) ADJ PLATE	117	REF	455679-1	LEVER, TERMINAL FEED ARM	52
REF	21024-5	WASHER, LOCK (NO.10) FEED GUIDE ROD	116	1	811242-2	BUMPER, HOLDDOWN	51
2	21024-2	WASHER, LOCK (NO.4) FRONT STRIP GUIDE	115	1	690753-1	SPACER, TONKER	50
			114	1	7-21002-9	BOLT, CRIMPER (5/16-24x1.00)	49
			113	1	690602-5	CAM, PRE-FEED 1 1/8 STROKE	48
			112				47
4	21024-4	WASHER, LOCK (NO.8) STRIPPER	111	1	459456-1	APPLICATOR, BASIC (SUBASSY)	46
REF	21899-4	WASHER, FLAT (5/16 DIA) SCREW ADJ	110	1	690191-1	PLUG, NYLON	45
			109	1	455673-1	RAM	44
1	21018-5	NUT, HEX (NO.6) HOLDDOWN	108	1	690125-1	WASHER, LAMINATED	43
REF	21018-5	NUT, HEX (6-32) FEED ADJ	107	1	690124-1	WASHER, RAM	42
			106				41
			105	2	23241-6	BALL, STEEL	40
1	456567-1	SCR, SHLD (.188øx.125) STRIPPER	104	2	690170-1	SPRING, COMPRESSION	39
1	21009-2	SCR, SKT SET (1/4-20x.25) LOC-WEL) RAM	103	1	690142-1	DISC, INSULATION	38
2	21017-2	SCR, DRIVE (#2x.19) ID PLATE	102	1	8-692155-7	DISC, WIRE	37
REF	6-23715-5	SCR, PAN HD (6-32x1.50) FEED ADJ	101	1	22480-5	WASHER, SPRING	36
1	461264-1	PLATE, IDENTIFICATION	100	1	690212-1	POST, RAM	35
2	2-21002-9	SCR, BHC (10-32x.75) DRAG	99	1	692776-2	SUPPORT, TERMINAL	34
1	22733-8	SCR, BHC (8-32x.38) LOC-WEL) ANVIL	98	REF	455675-1	PLATE, BASE	33
REF	2-21002-9	SCR, BHC (10-32x.75) CAP	97	1	690432-3	SCREW, ADJUSTMENT	32
REF	2-22733-8	SCR, BHC (1/4-20x.62) HOUSING	96				31
REF	2-21002-7	SCR, BHC (10-32x.50) SG ADJ BLOCK	95	REF	455689-1	BLOCK, STRIP GUIDE ADJ	30
4	2-21002-2	SCR, BHC (8-32x.50) SHEAR	94	1	455671-1	PLATE, STRIP GUIDE	29
2	2-21000-8	SCR, BHC (8-32x.62) R STRIP GUIDE	93	1	2-455888-2	SPACER, FRONT SHEAR DEP	28
			92	2	1-22284-0	SPRING, DRAG	27
1	1-21002-7	SCR, BHC (6-32x.38) CAM	91	1	690546-1	LEVER, DRAG RELEASE	26
			90	1	240792-1	DRAG, STOCK	25
			89	1	690504-9	GUIDE, STRIP (REAR)	24
			88	1	690438-1	GUIDE, STRIP (FRONT)	23
			87				22
1	2-22603-0	SCR, HEX HEAD (8-32x.31) FEED FINGER	86	REF	4-22284-9	SPRING, FEED RETURN	21
2	1-21000-3	SCR, SKT CAP (4-40x.25) F STRIP GUIDE	85	1	458950-1	ARM, STRIPPER	20
3	2-21000-7	SCR, SKT CAP (8-32x.50) STRIPPER	84	1	458949-1	STRIPPER	19
REF	3-21000-7	SCR, SKT CAP (10-32x.75) FEED ROD GD	83				18
REF	3-21000-6	SCR, SKT CAP (10-32x.62) FEED ADJ BLK	82				17
1	3-21000-4	SCR, SKT CAP (10-32x.38) SG ADJ BLK	81	1	691667-1	GUARD, CHIP (FRONT)	16
REF	3-21000-4	SCR, SKT CAP (10-32x.38) PIVOT BLOCK	80				15
REF	455749-1	GUARD, WINDOW	79				14
			78				13
			77	1	5-22280-0	SPRING, SHEAR	12
			76	1	690461-1	STOP, SHEAR	11
			75	1	690459-1	HOLDER, SHEAR (FRONT)	10
			74	1	462006-1	SHEAR, FLOAT (FRONT)	9
2	690603-1	SPRING, ASSIST	73	1	7-803653-8	ANVIL	8
2	23030-1	SCR, SKT CAP (6-32x.25) CP DISC	72	1	5-240641-4	SPACER, HOLD-DOWN	7
REF	458109-1	WASHER, SPECIAL	71				6
REF	690517-1	SPACER	70	1	1-455889-4	DEPRESSOR, SHEAR (FRONT)	5
REF	22594-8	NUT, HEX	69	1	238011-7	SPACER, TUBULAR	4
REF	240628-1	PLATE, ADJUSTMENT	68	1	2-683453-4	CRIMPER, INSULATION	3
REF	240626-1	SHAFT, PIVOT	67	1	455888-5	SPACER, CRIMPER	2
REF	240633-1	BUSHING	66	1	4-456406-3	CRIMPER, WIRE	1
REF	455680-1	LEVER, INTERMEDIATE	65				
REF	240629-1	BLOCK, PIVOT	64				
REF	240632-2	SCREW, ADJUSTMENT FEED ROD	63				
REF	240659-3	PIN, CAM ROLLER	62				
REF	240658-1	ROLLER, CAM	61				
REF	454398-2	ROD, FEED	60				
REF	454178-1	GUIDE, FEED ROD	59				

REMARKS	NO	REV
APPL USED ON MACHINE PART NO	MACH SERIAL NO	DISTRIBUTION
CUSTOMER NAME	APPL SERIAL NO	ORIGINAL
ADDRESS	PURCHASE ORDER	CUSTOMER COPY
CITY	ENG APP	FIELD ENG COPY

QTY	PART NO	DESCRIPTION	ITEM NO
2	690603-1	SPRING, ASSIST	73
2	23030-1	SCR, SKT CAP (6-32x.25) CP DISC	73
REF	458109-1	WASHER, SPECIAL	72
REF	690517-1	SPACER	71
REF	22594-8	NUT, HEX	70
REF	240628-1	PLATE, ADJUSTMENT	69
REF	240626-1	SHAFT, PIVOT	68
REF	240633-1	BUSHING	67
REF	455680-1	LEVER, INTERMEDIATE	66
REF	240629-1	BLOCK, PIVOT	65
REF	240632-2	SCREW, ADJUSTMENT FEED ROD	64
REF	240659-3	PIN, CAM ROLLER	63
REF	240658-1	ROLLER, CAM	62
REF	454398-2	ROD, FEED	61
REF	454178-1	GUIDE, FEED ROD	60

CRIMPING DATA				APPLICATOR WILL APPLY	
PAD LTR	CRIMP HEIGHT	WIRE SIZE	WIRE STRIP LENGTH	170312-1	
A	.078	14			
B	.066	16			
C	.059	18			
D	NOT USED				
CRIMP	SIZE	TYPE	FEED	APPL INST	
WIRE	.090	F	.433	AI 8040	
INSUL	.190	F			
WIRE RANGE	INSULATION RANGE	MACHINE NO			
18-14	.089-.154	565435-5			
AMP-O-ELECTRIC PRE-FEED					