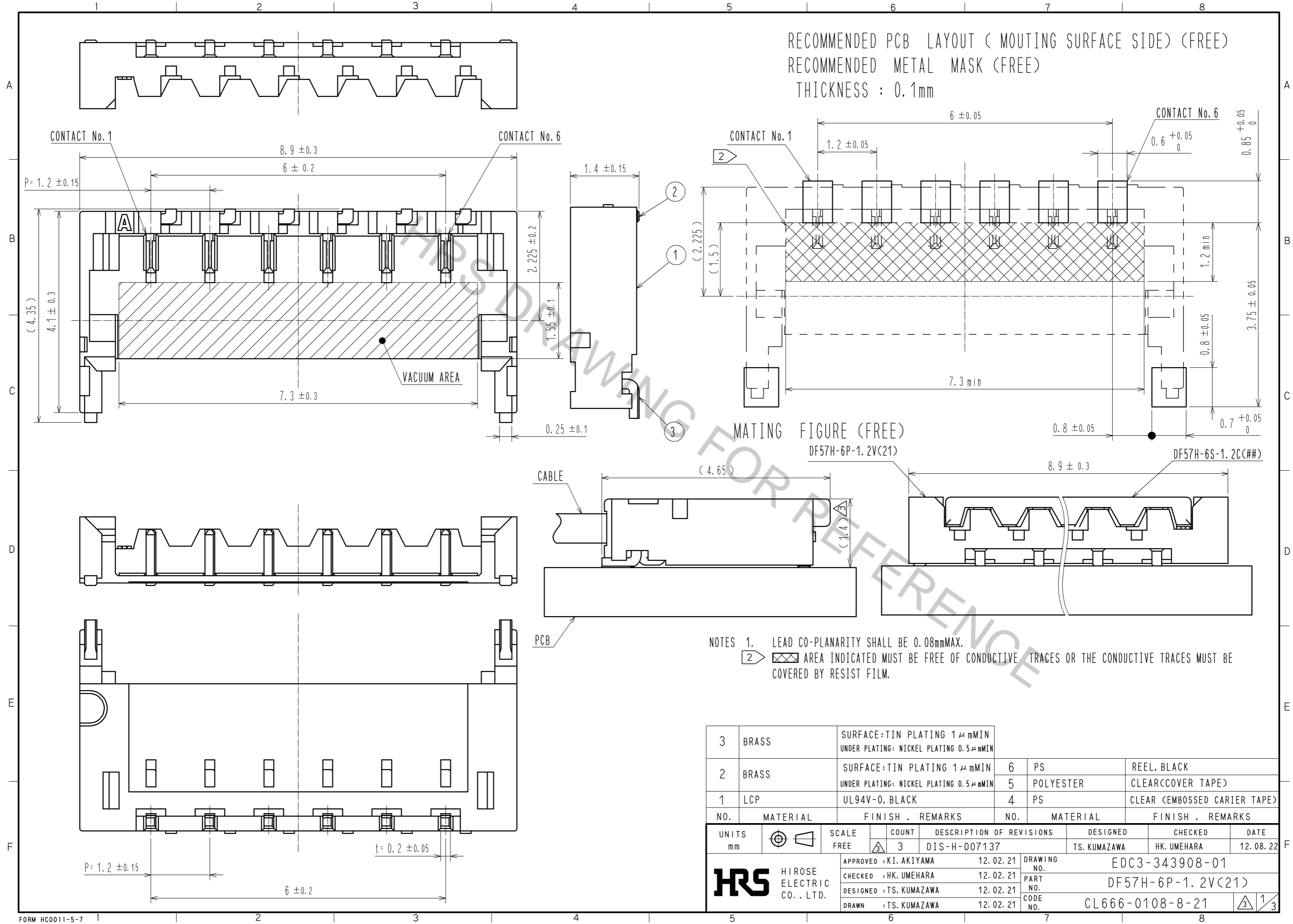


Apr.1.2017 Copyright 2017 HIROSE ELECTRIC CO., LTD. All Rights Reserved.



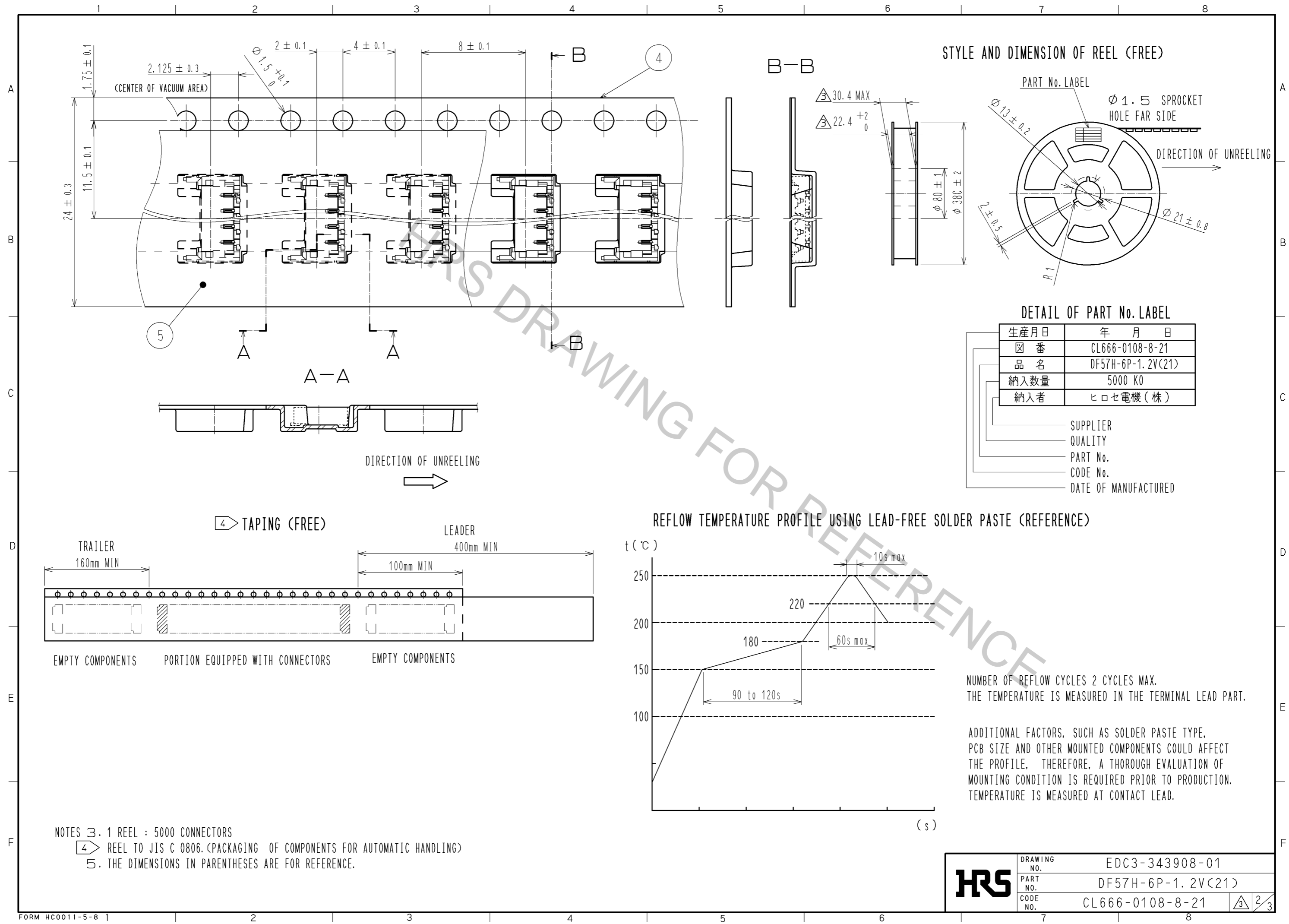
RECOMMENDED PCB LAYOUT (MOUNTING SURFACE SIDE) (FREE)
 RECOMMENDED METAL MASK (FREE)
 THICKNESS : 0.1mm

MATING FIGURE (FREE)
 DF57H-6P-1.2V(21)

DF57H-6S-1.2C(##)

- NOTES 1. LEAD CO-PLANARITY SHALL BE 0.08mmMAX.
 2. AREA INDICATED MUST BE FREE OF CONDUCTIVE TRACES OR THE CONDUCTIVE TRACES MUST BE COVERED BY RESIST FILM.

3	BRASS	SURFACE:TIN PLATING 1μmMIN UNDER PLATING: NICKEL PLATING 0.5μmMIN			
2	BRASS	SURFACE:TIN PLATING 1μmMIN UNDER PLATING: NICKEL PLATING 0.5μmMIN	6	PS	REEL, BLACK
1	LCP	UL94V-0, BLACK	5	POLYESTER	CLEAR(COVER TAPE)
			4	PS	CLEAR (EMBOSSED CARRIER TAPE)
NO.	MATERIAL	FINISH, REMARKS	NO.	MATERIAL	FINISH, REMARKS
UNITS		SCALE	COUNT	DESCRIPTION OF REVISIONS	
mm		FREE	3	DESIGNED	CHECKED
			DIS-H-007137	TS. KUMAZAWA	HK. UMEHARA
			APPROVED : KI. AKIYAMA	12.02.21	DRAWING NO. EDC3-343908-01
			CHECKED : HK. UMEHARA	12.02.21	PART NO. DF57H-6P-1.2V(21)
			DESIGNED : TS. KUMAZAWA	12.02.21	CODE NO. CL666-0108-8-21
			DRAWN : TS. KUMAZAWA	12.02.21	

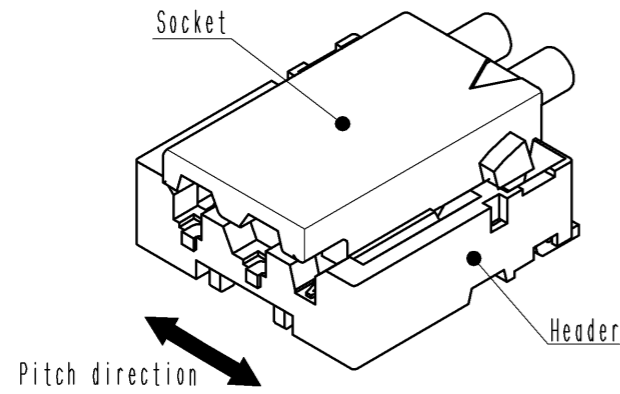


HRS	DRAWING NO.	EDC3-343908-01
	PART NO.	DF57H-6P-1.2V(21)
	CODE NO.	CL666-0108-8-21
		2/3

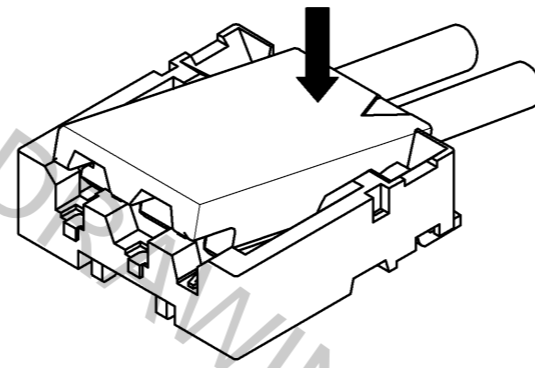
DF57 Series Mating / Unmating Operation Instruction (For DF57 series)

Mating

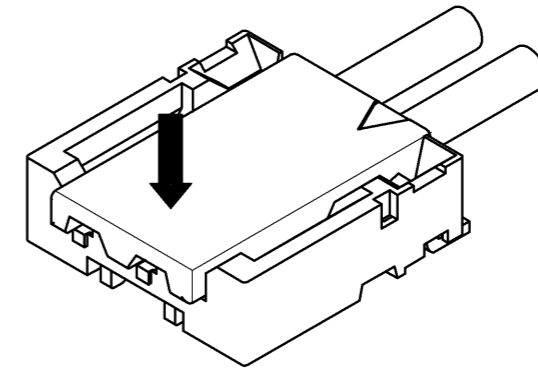
① By positioning the convexity of the socket sides to the header concavity, align the centers of the socket and the header in pitch direction.



② Slightly press the socket down at cable side to tilted angle.

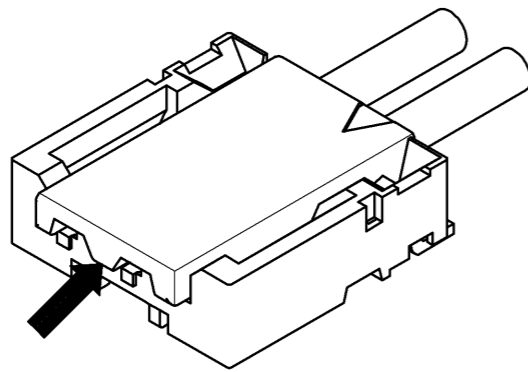


③ Press down at the lever side with stabilizing the cable side to insert. Mating completes.

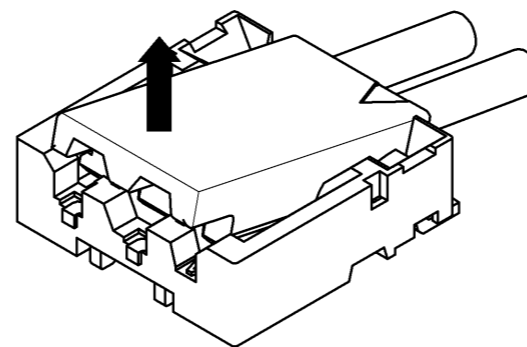


Unmating

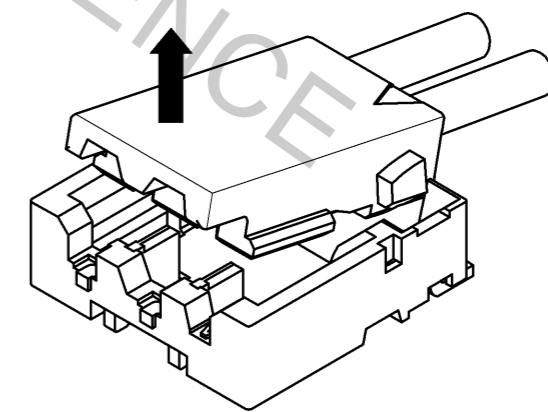
① Hook the lever with finger nail.



② Lift up to the upper direction and friction lock is released.



③ Lift up to the upper direction and positive lock is released. Removal completes.



HRS

DRAWING NO.	EDC3-343908-01
PART NO.	DF57H-6P-1.2V(21)
CODE NO.	CL666-0108-8-21

3/3